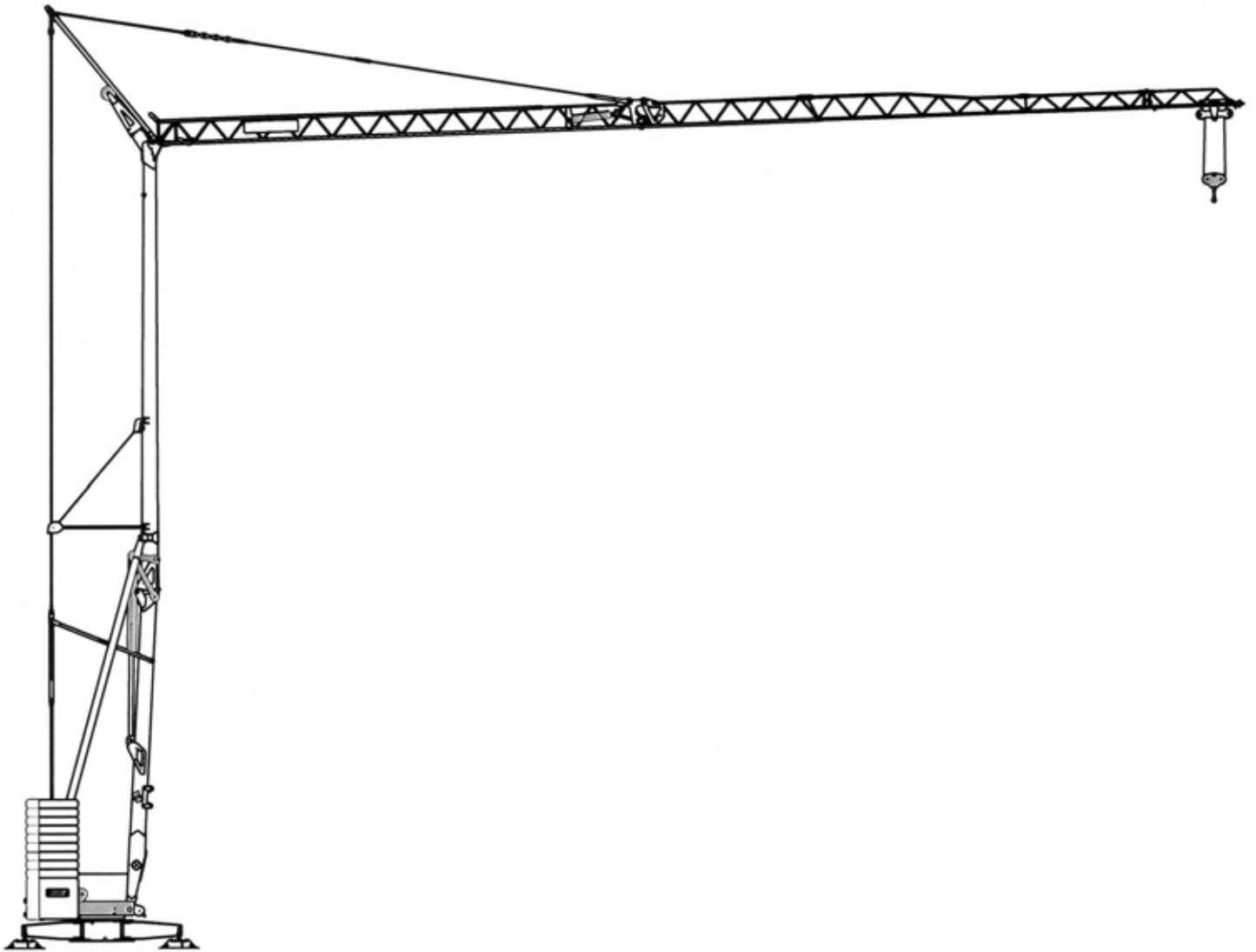
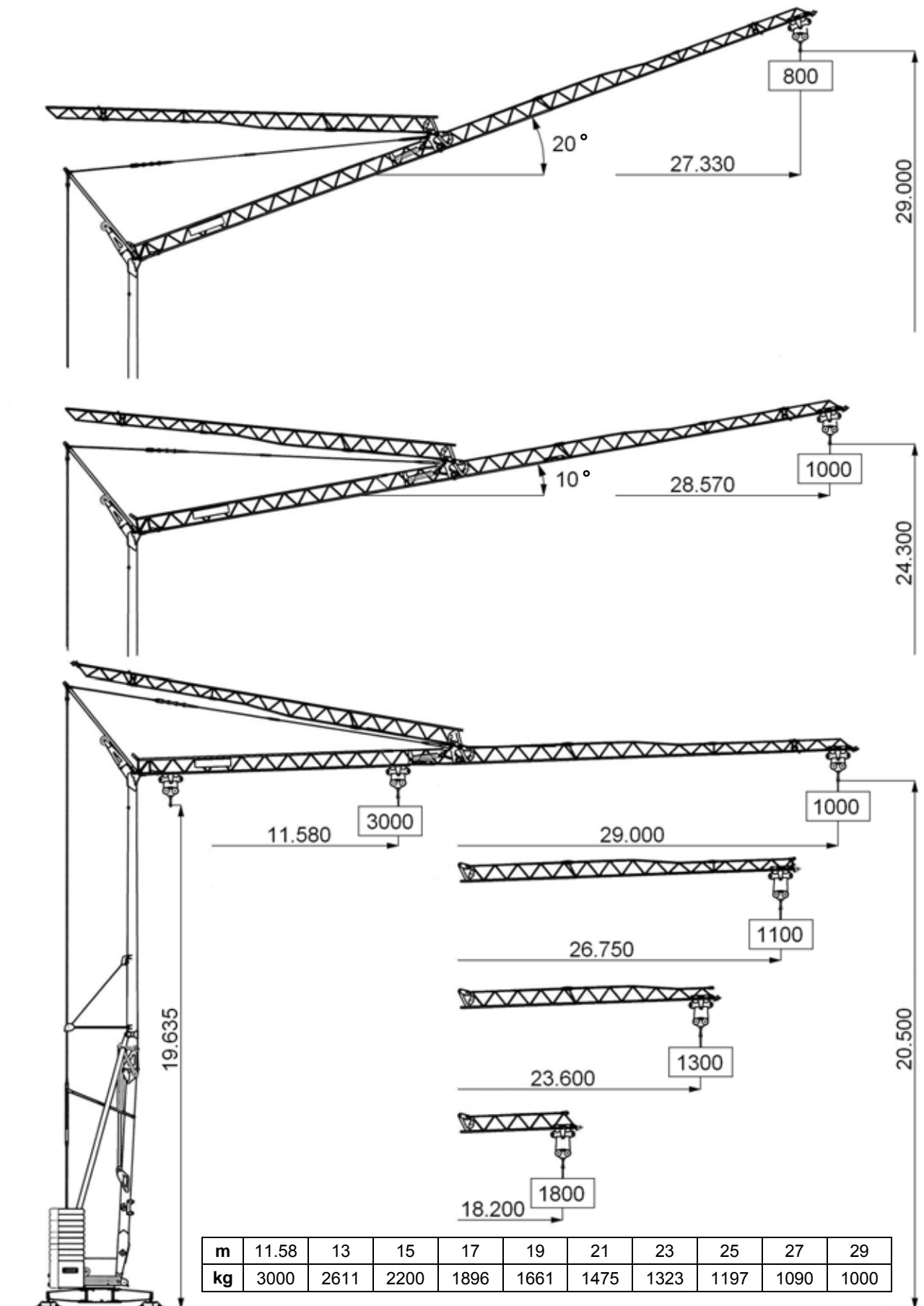


VANSON VC 29


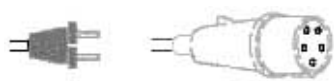
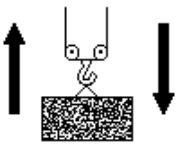
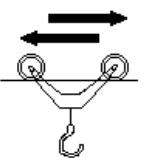
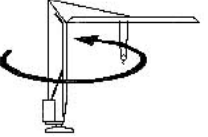
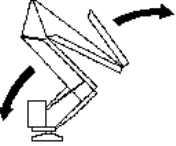

Hydraulic Self-Erecting Crane

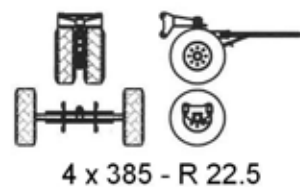
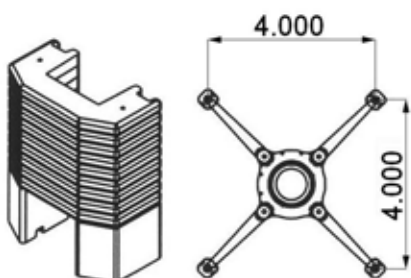
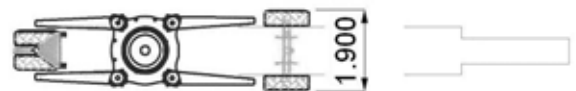
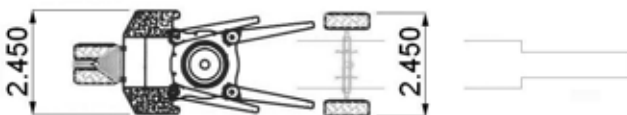
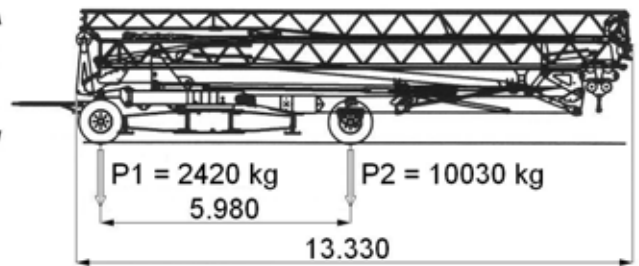
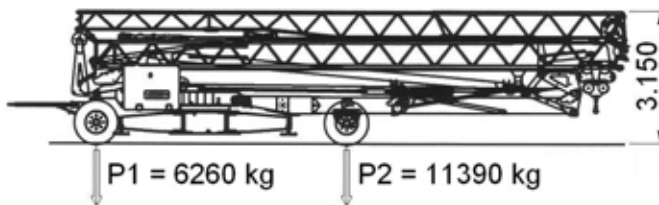
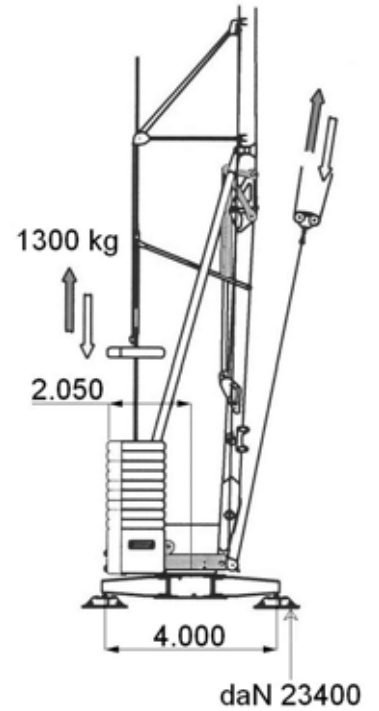


VANSON VC 29

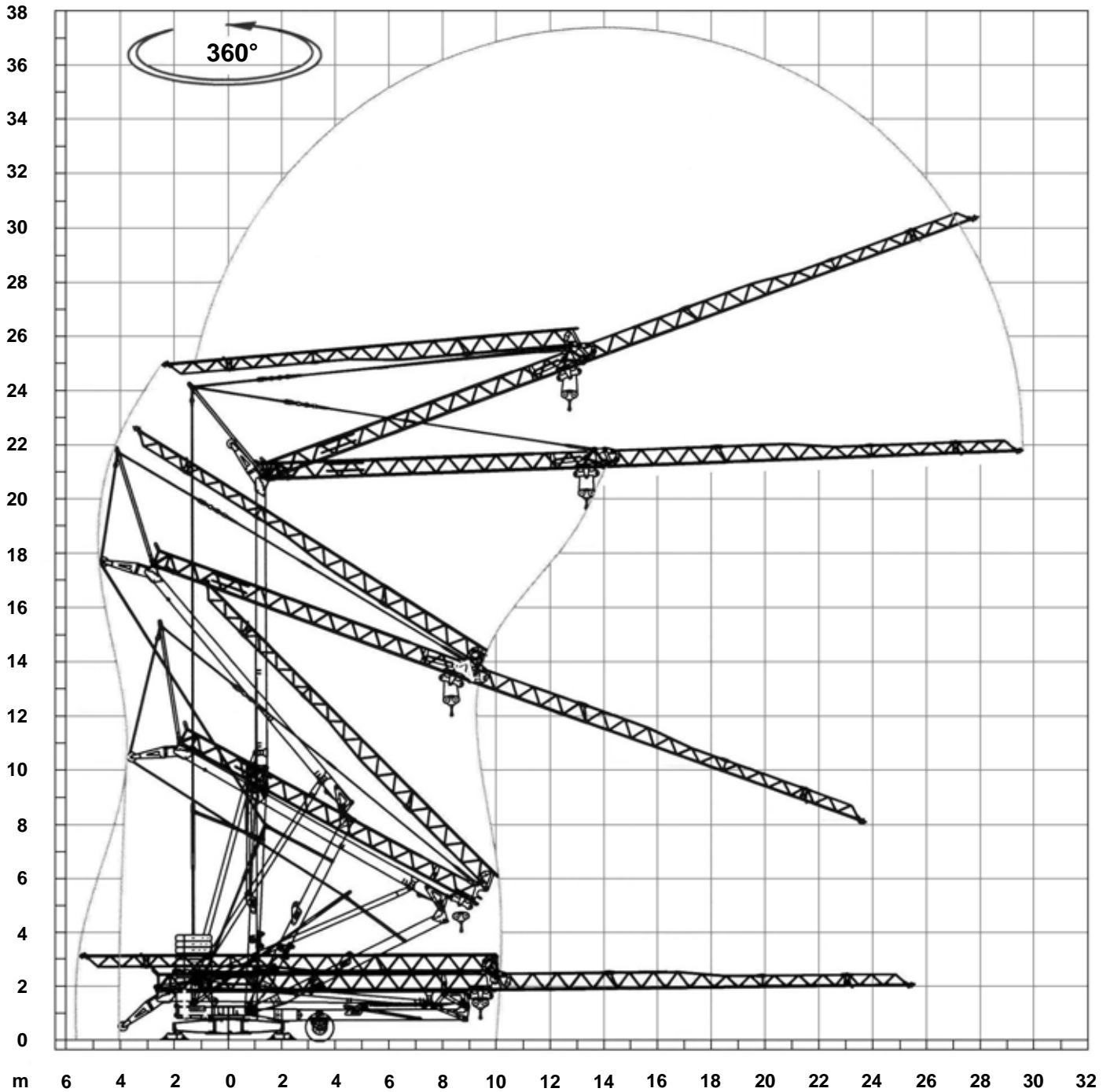


VANSON VC 29

 50 Hz V + 10% - 10%	 400V - 12kVA		
 m/l' kg kW	▶	▶▶	▶▶▶
	8	20	46
	3000	3000	1000
11 (Inverter)			
 m/l' kW	▶	▶▶	▶▶▶
	17.8	28.6	53.5
	3 (Inverter)		
 g/l' kW	▶	▶▶	▶▶▶
	0.3	0.6	0.83
	3 (Inverter)		
 min kW	▶		
	12		
	3		
 kg	12350 + (5200 + 13000)		



VANSON VC 29



STANDARD FEATURES

3-speed lifting, rotation and trolley with inverter control, galvanised structure, counterweight, pull-up jib, translation trolley with motor and limit switch at base of gantry, operation with folded jib, cable-operated pushbutton remote control, guard for slewing ring and mechanisms, designed to allow installation of self-ballasting device and radio control, stainless steel electrical cabinet, documentation in accordance with EU standards.

VANSON CRANES LIMITED

Honey Pot Lane, Colsterworth, Grantham, Lincolnshire. NG33 5LY.
Telephone: +44 (0) 1476 861011 Fax: +44 (0) 1476 861014
E-mail: sales@vansoncranes.com Website: www.vansoncranes.com

February 2007