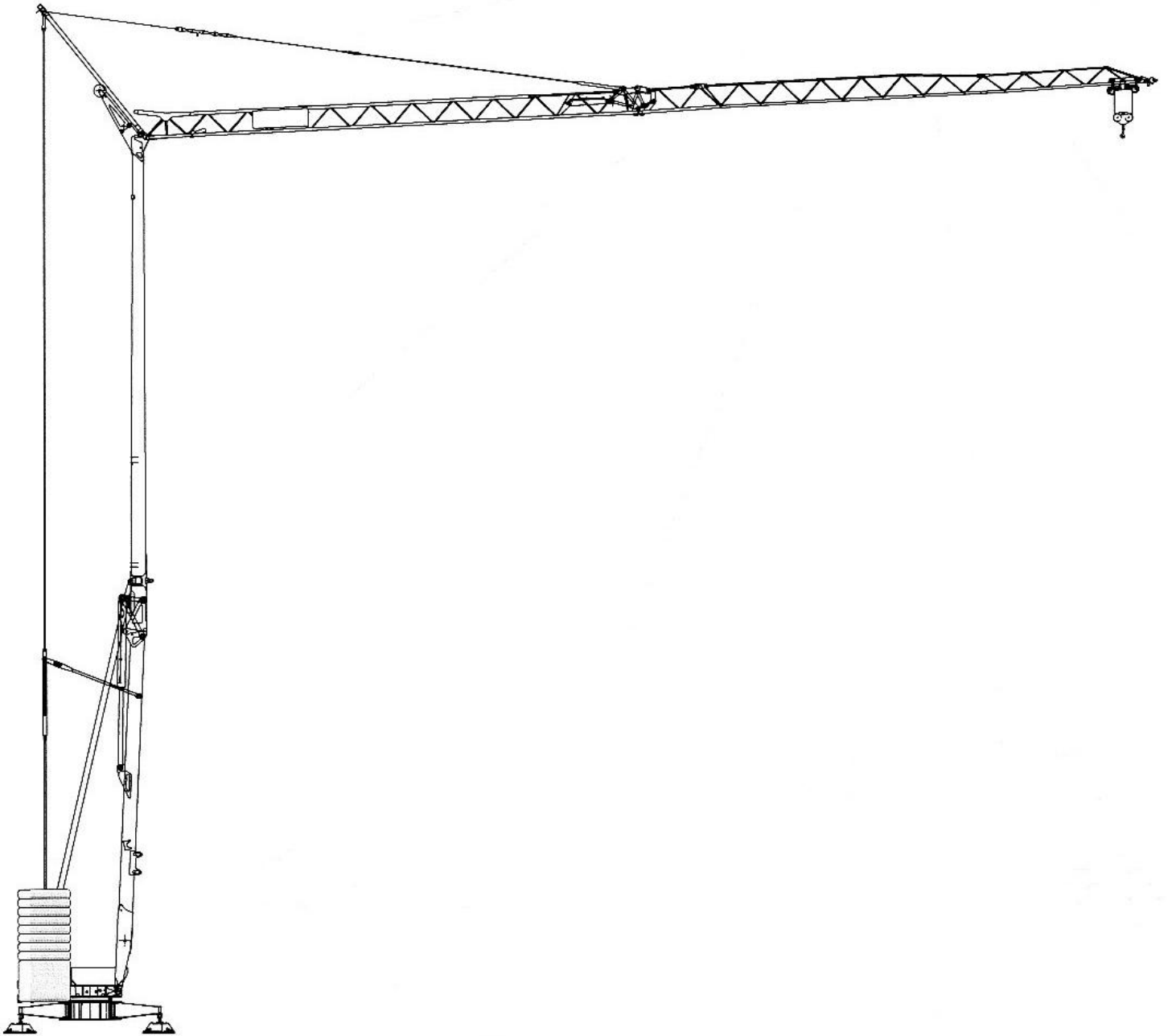
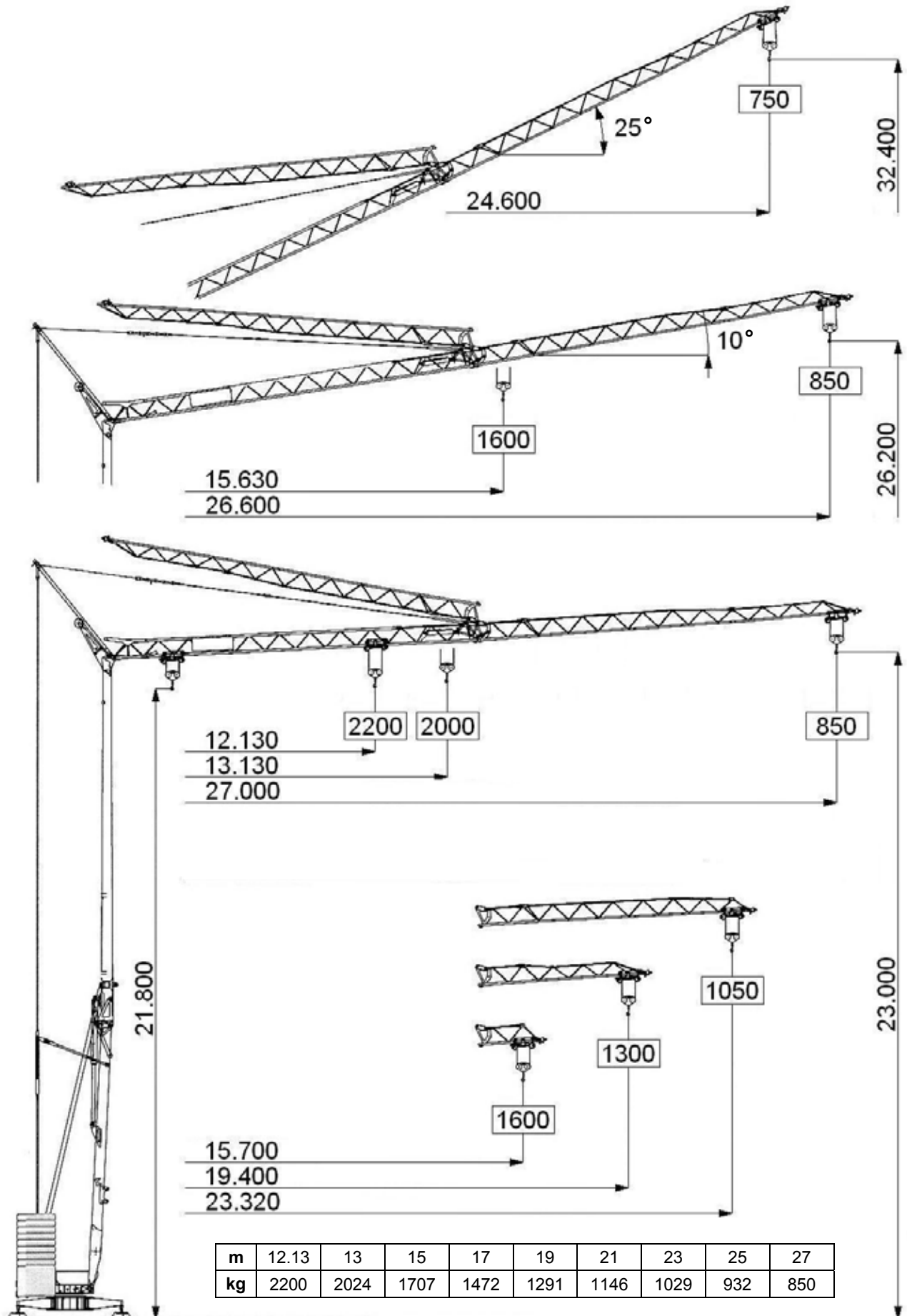


VANSON VC 27a

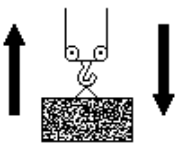
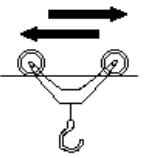
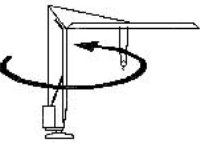
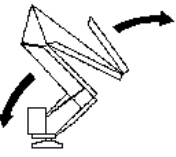

Hydraulic Self-Erecting Crane

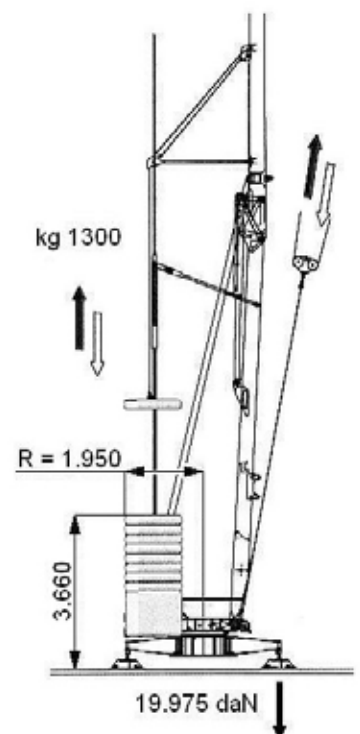
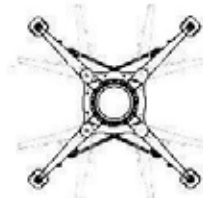
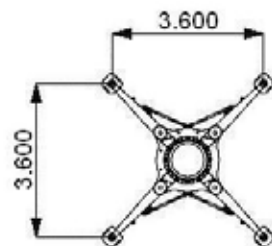
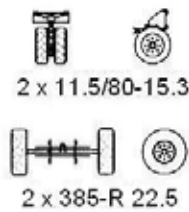
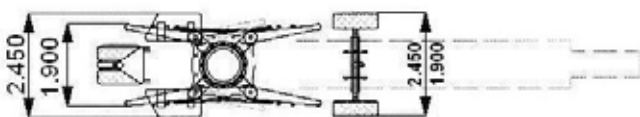
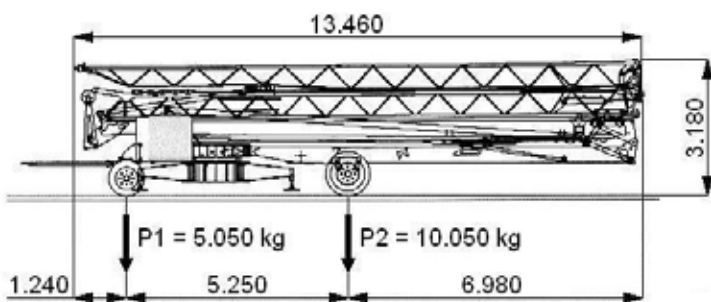


VANSON VC 27a

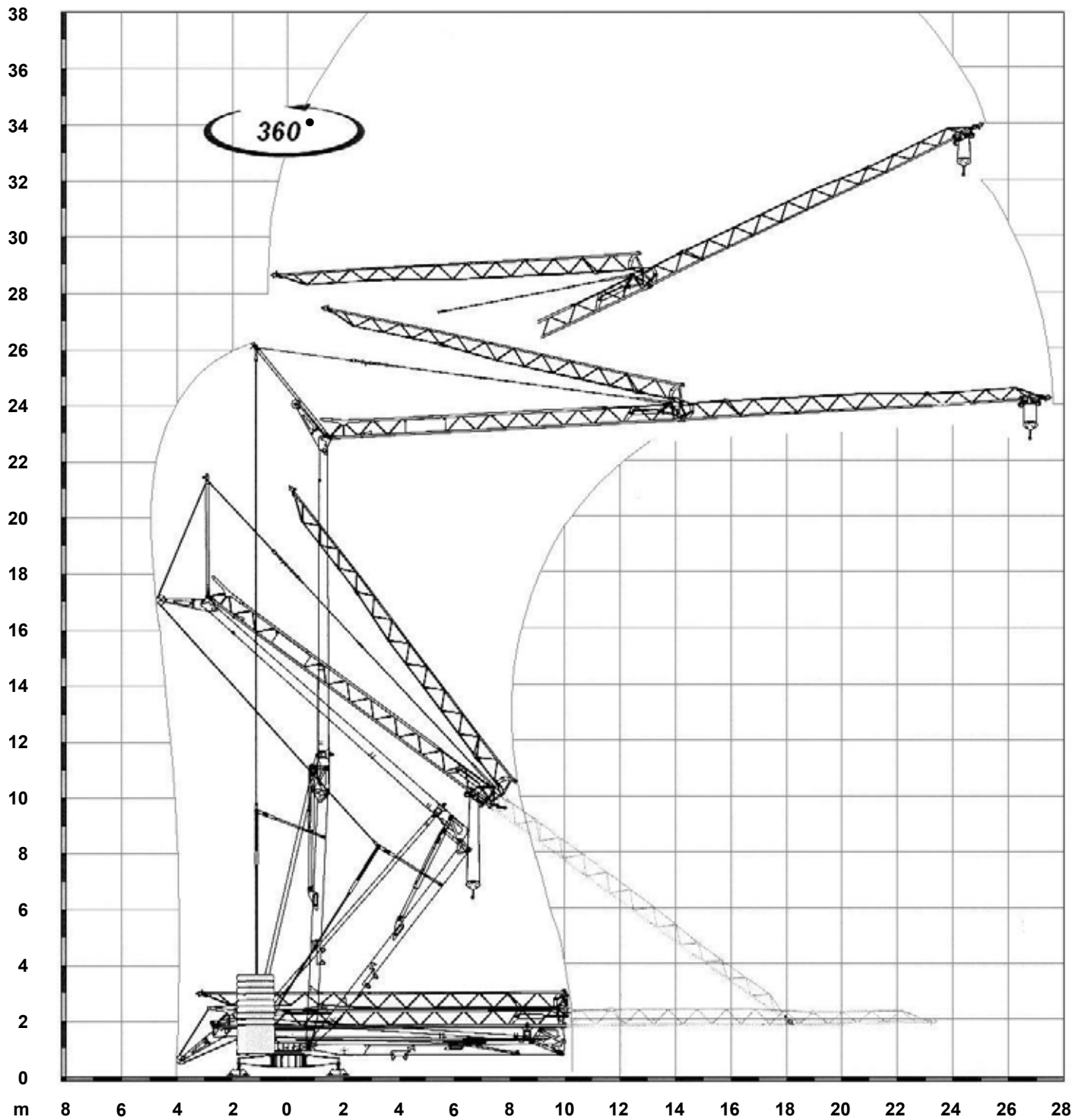


VANSON VC 27a

		⚡ 50 Hz V + 10% - 10%	↑↓ m/l'	▶	▶▶	▶▶▶	▶▶▶▶
				5	15	22	42
	kg	230V 3kW		2200	1300↑2200↓	750↑1000↓	300↑850↓
	kg	230V 4.5kW		2200	1750↑2200↓	850↑1000↓	500↑850↓
	kg	230V 6kW		2200	2200	1000	850
	kg	400V 8kVA		2200	2200	1000	850
kW		7.5 (HP 10) Inverter					
	m/l'		▶	▶▶	▶▶▶		
	kW	17.8		28.6	53.5		
		3 (HP 4) Inverter					
	g/l'		▶	▶▶	▶▶▶		
	kW	0.15		0.42	0.84		
		1.5 (HP 2) Inverter					
	min			▶			
	kW			8			
		2.2 (HP 3)					
	kg	10000 + (5200 + 10400)					



VANSON VC 27a



STANDARD FEATURES

4-speed lifting, 3-speed rotation and trolley with inverter control, galvanised structure, counterweight, pull-up jib, translation trolley with motor and limit switch at base of gantry, operation with folded jib, cable-operated pushbutton remote control, guard for slewing ring and mechanisms, designed to allow installation of self-ballasting device and radio control, stainless steel electrical cabinet, documentation in accordance with EU standards.

VANSON CRANES LIMITED

Honey Pot Lane, Colsterworth, Grantham, Lincolnshire. NG33 5LY.
Telephone: +44 (0) 1476 861011 Fax: +44 (0) 1476 861014
E-mail: sales@vansoncranes.com Website: www.vansoncranes.com

February 2007