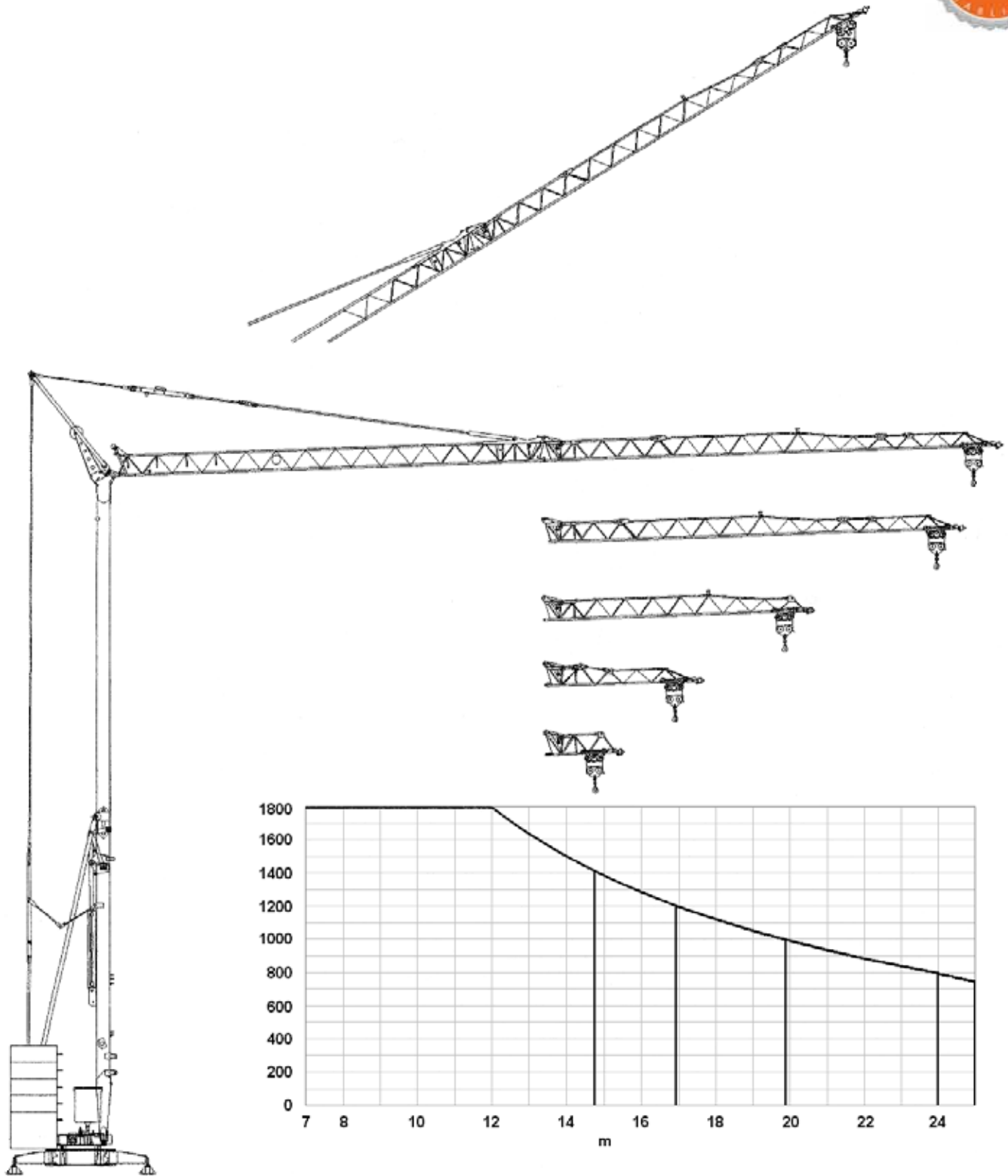
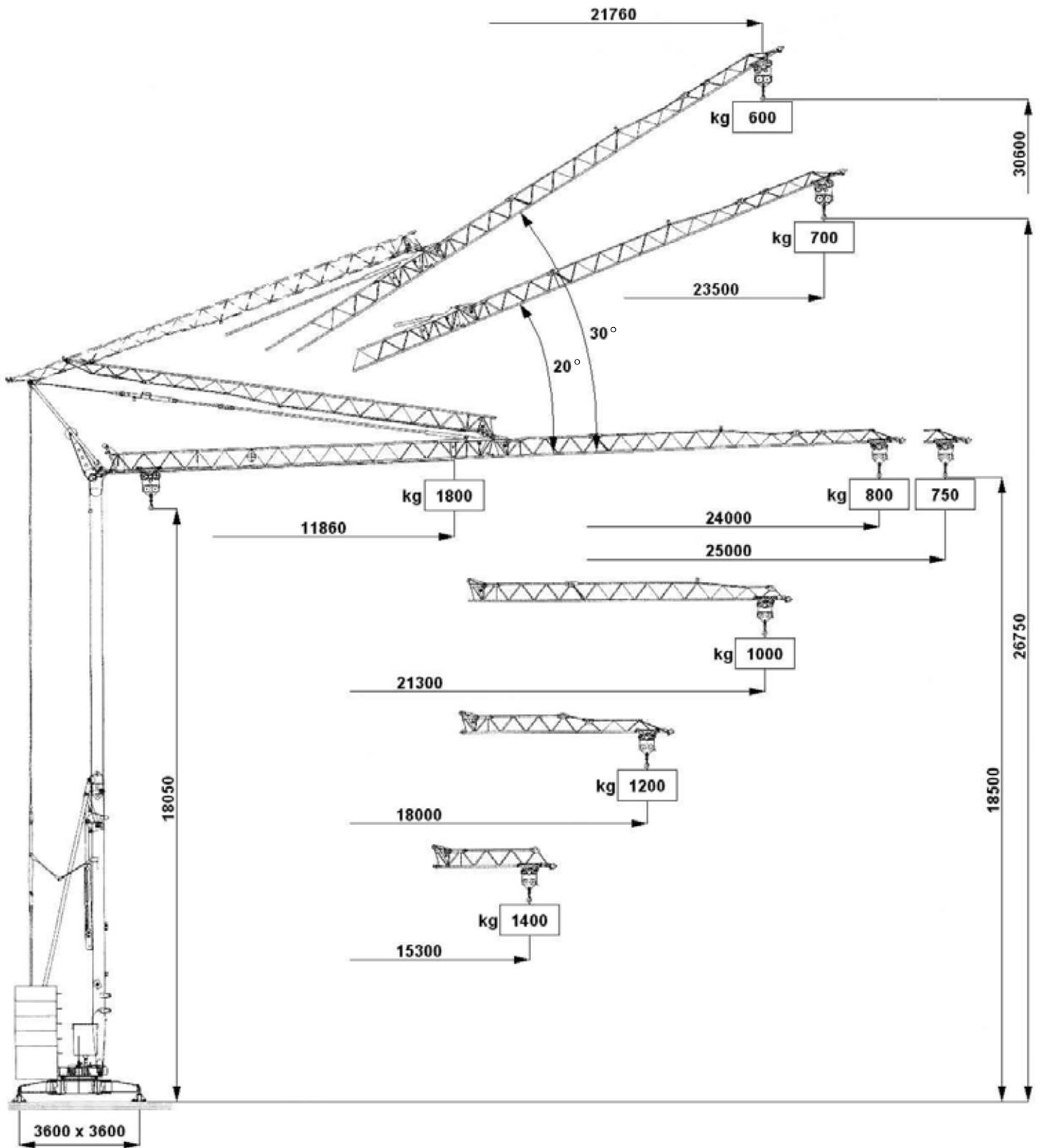


VANSON VC 25

Hydraulic Self-Erecting Crane



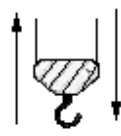


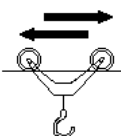



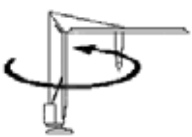








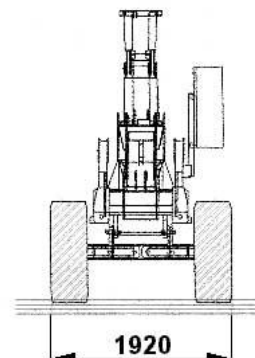
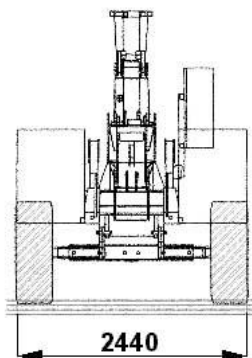
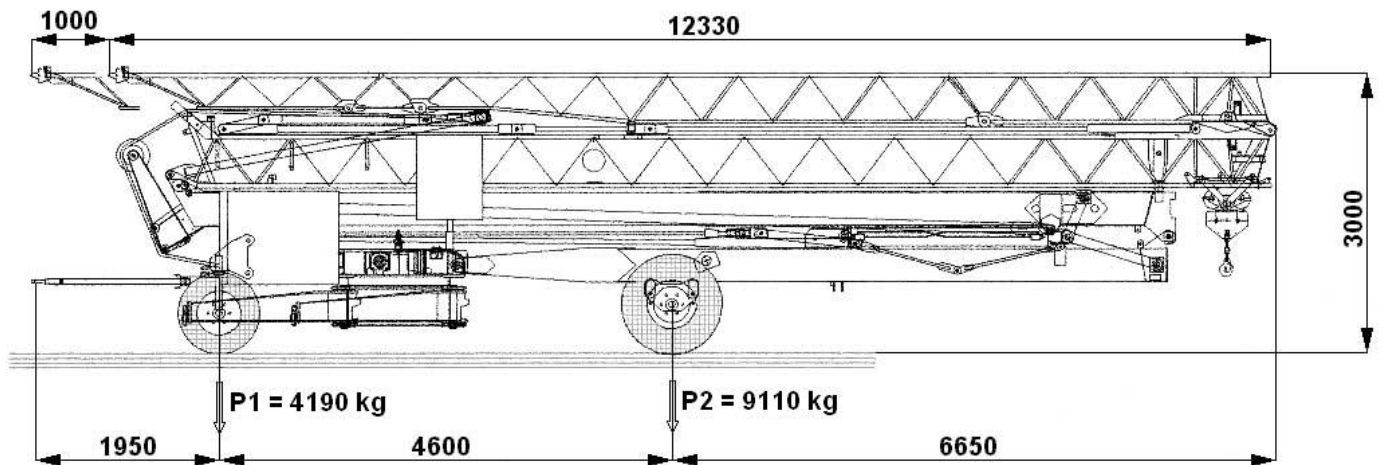
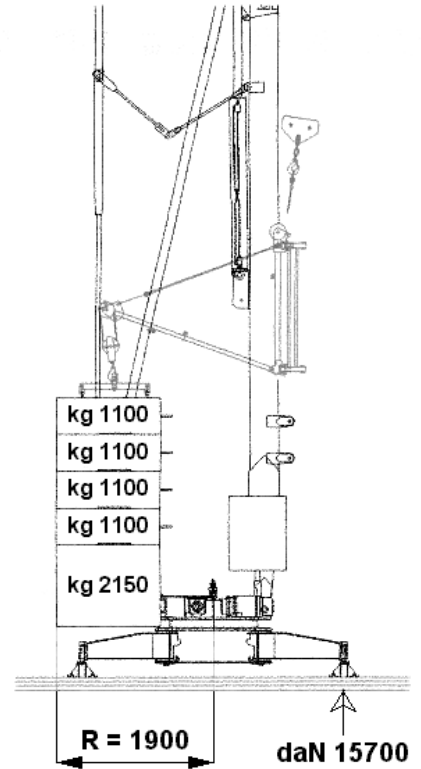
VANSON VC 25



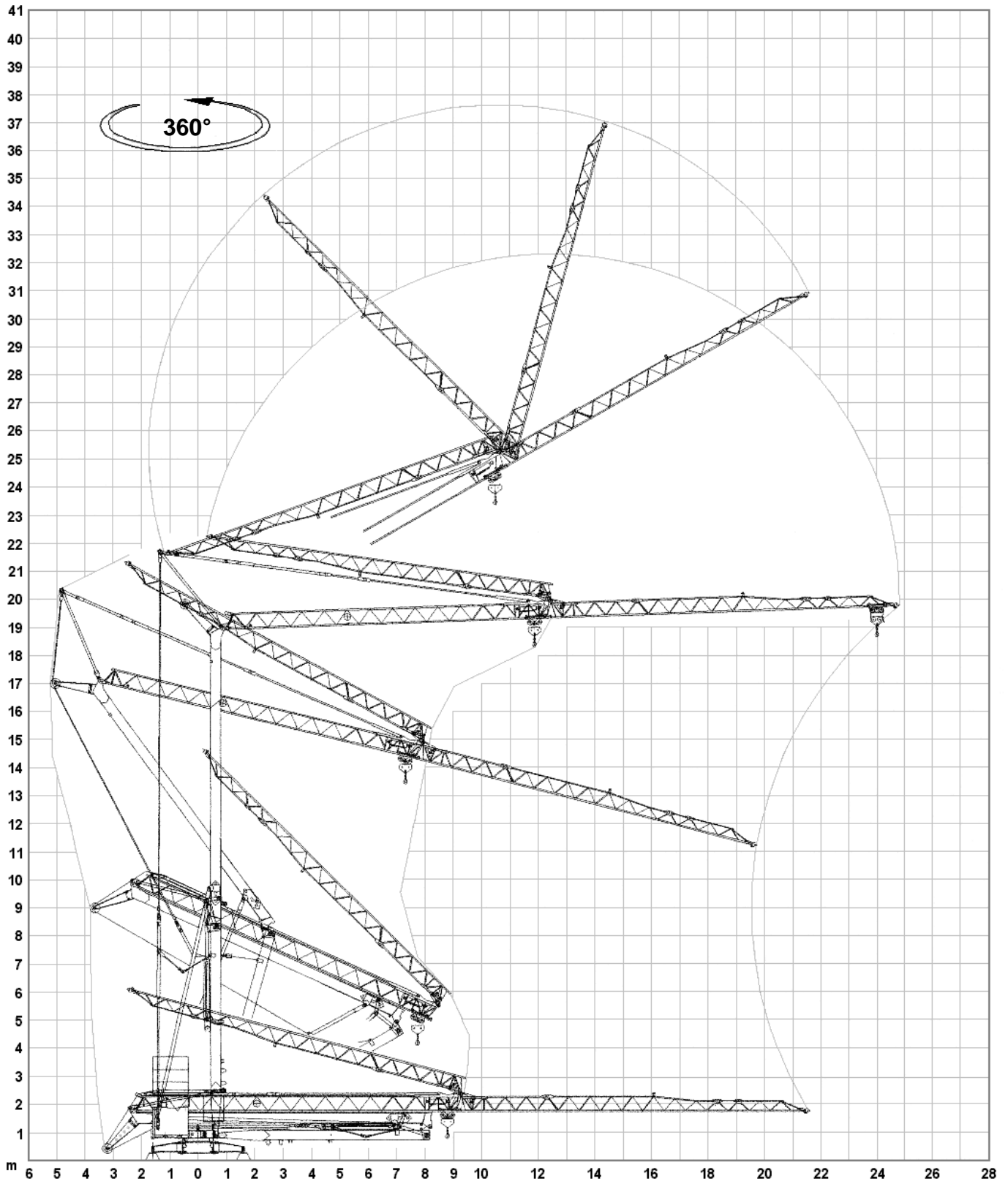
kg	1800	1700	1600	1500	1400	1300	1200	1100	1000	900	800	750
m	11.8	12.4	13.1	13.9	14.7	15.7	16.9	18.2	19.8	21.7	24	25

VANSON VC 25

 50 Hz V + 6% - 10%	 380 V - 15 kVA		
	 m/l' kg KW	 4.5 1800 1.3	 18 1800 5.5
 m/l' KW	 11 2.2 (Inverter)	 26 2.2 (Inverter)	 48 2.2 (Inverter)
 rpm KW	 0.3 1.84 (Inverter)	 0.6 1.84 (Inverter)	 0.9 1.84 (Inverter)
 min KW	 8 3		
 kg	8900		



VANSON VC 25



STANDARD FEATURES

3-speed lifting and rotation with electronic control, galvanised structure, installation counterweight, pull-up modular jib, translation trolley, operation with folded jib, cable-operated pushbutton remote control, guard for slewing ring and mechanisms, designed to allow installation of self-ballasting device and radio control, stainless steel electrical cabinet, documentation in accordance with EU standards.

VANSON CRANES LIMITED

Honey Pot Lane, Colsterworth, Grantham, Lincolnshire. NG33 5LY.

Telephone: +44 (0) 1476 861011 Fax: +44 (0) 1476 861014

E-mail: sales@vansoncranes.com Website: www.vansoncranes.com

February 2007