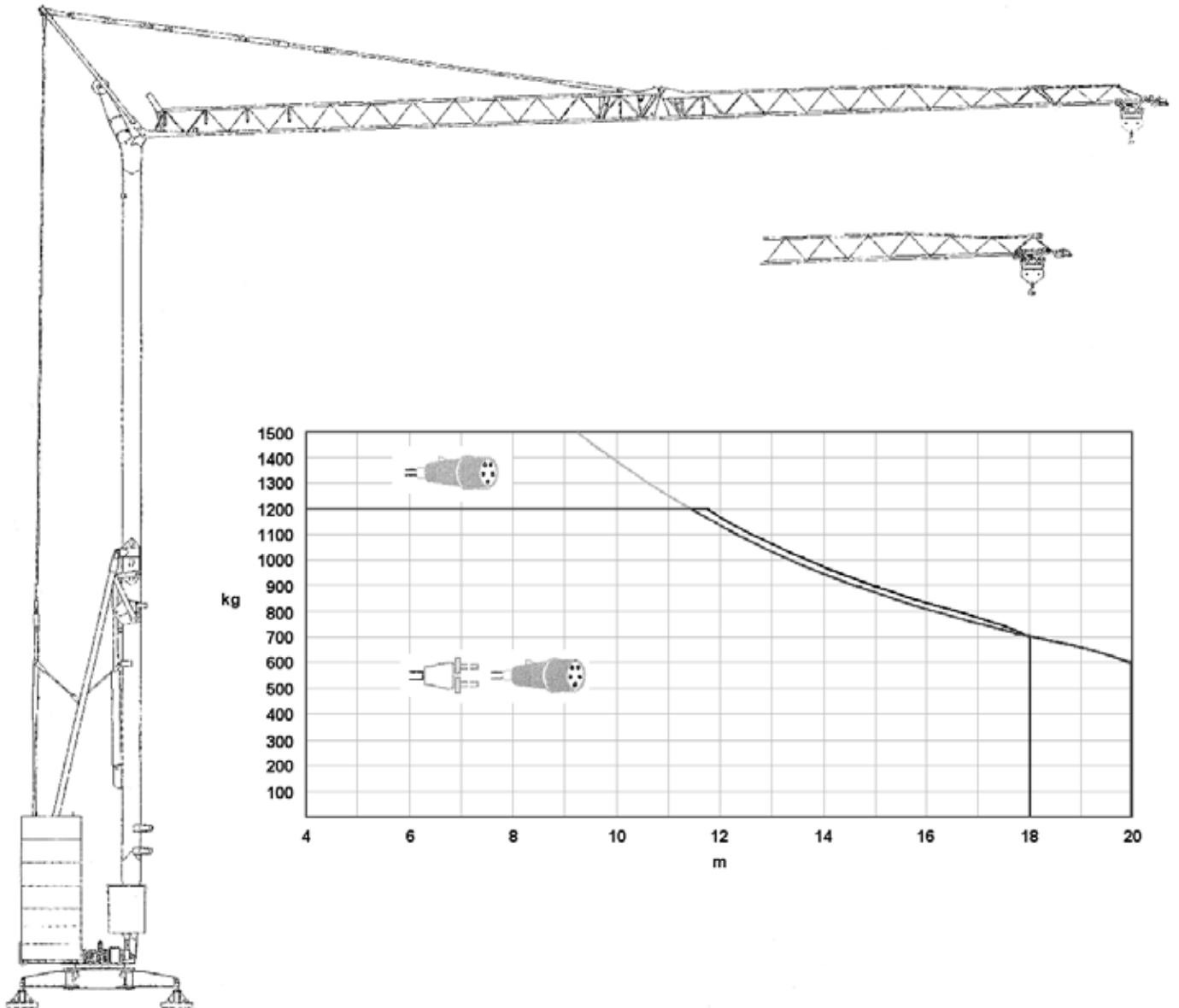
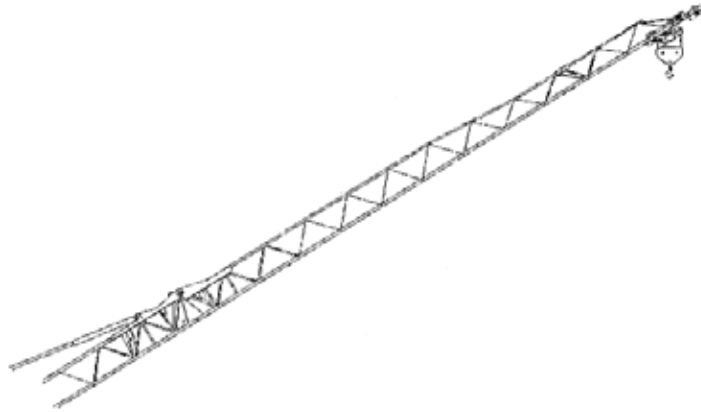
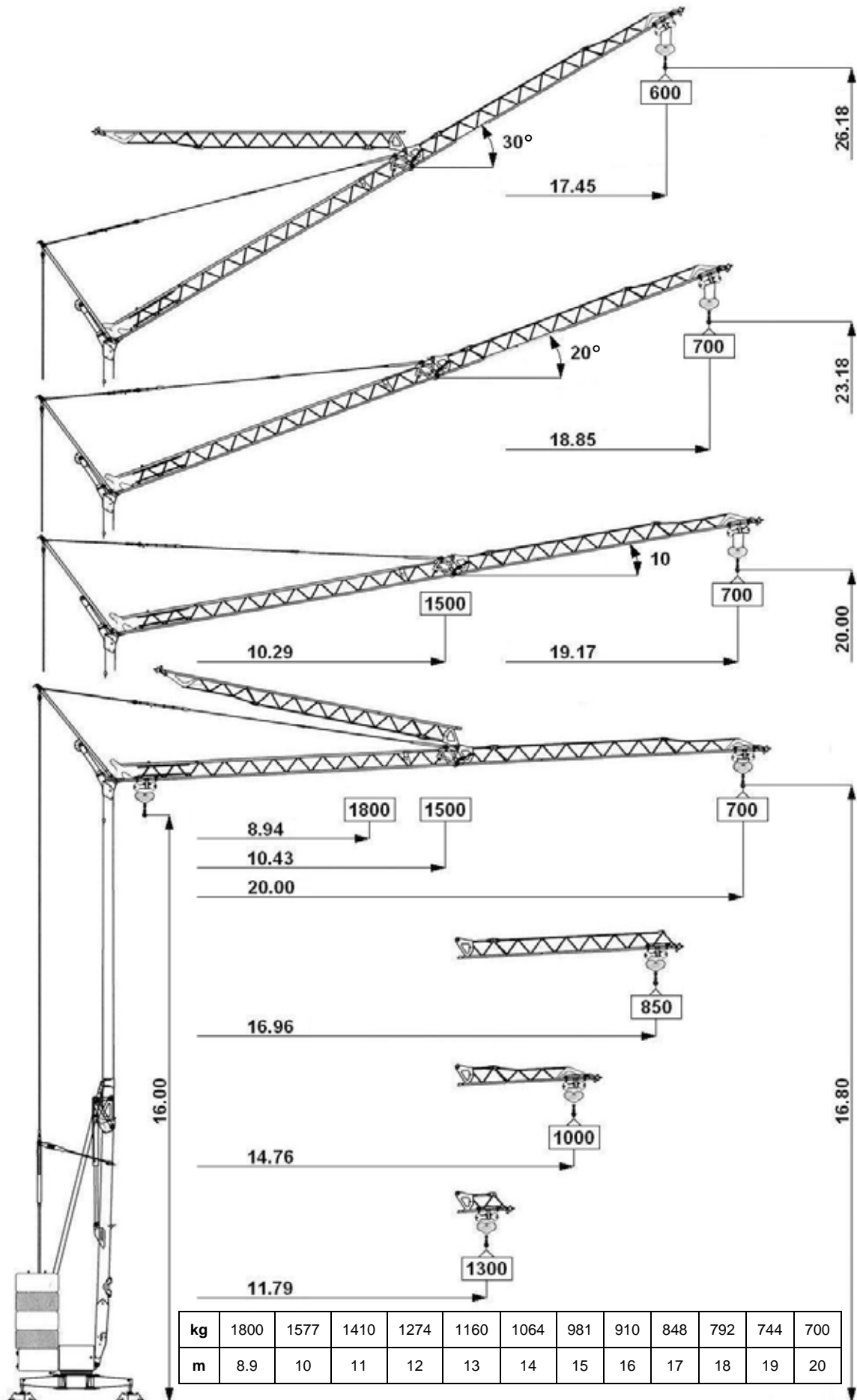


VANSON VC 20


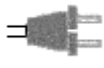

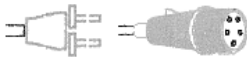

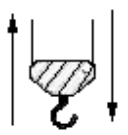
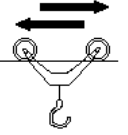
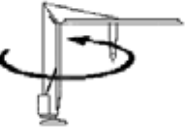
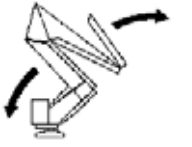

Hydraulic Self-Erecting Crane

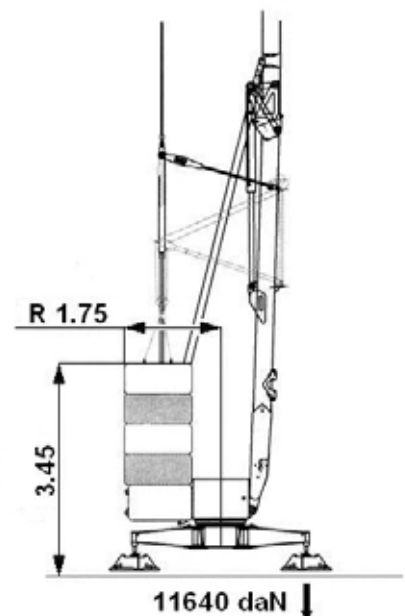
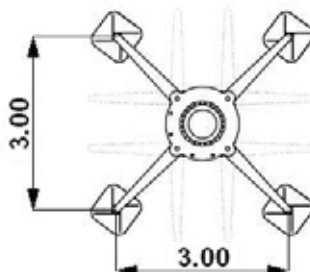
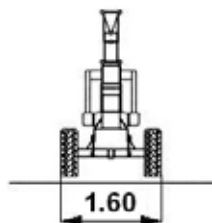
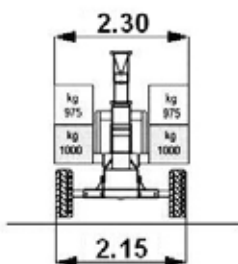
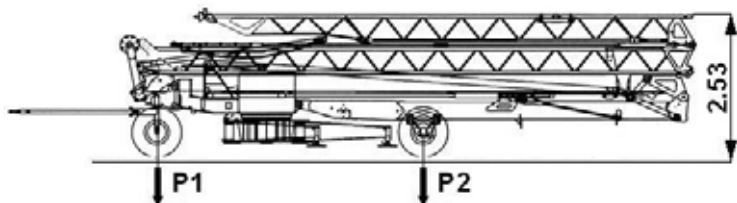
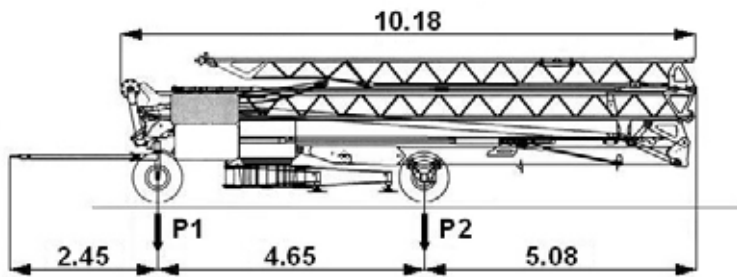


VANSON VC 20

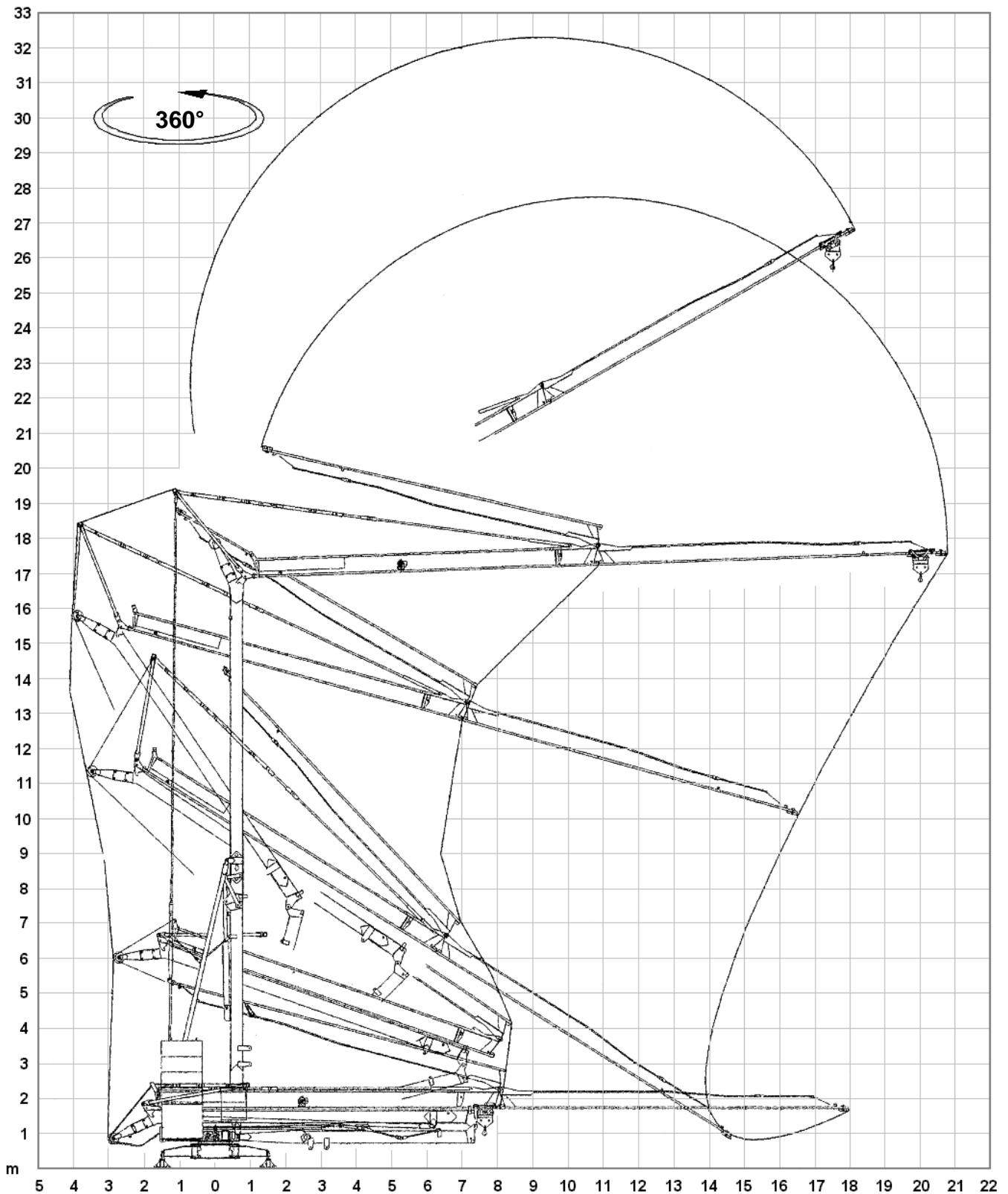


VANSON VC 20

 50 Hz V + 6% - 10%	 220V - 3kVA			 220V - 6kVA			 380V - 6kVA			 380V - 8kVA		
	 m/l' kg KW	▶	▶▶	▶▶▶	▶	▶▶	▶▶▶	▶	▶▶	▶▶▶	▶	▶▶
	6 ↓ _{8.5}	15 ↓ ₁₇	23.5 ↓ ₃₄	8.5	17	34	8.5	17	34	8.5	17	34
	1200	1200	600	1200	1200	600	1200	1200	600	1500	1500	600
	4.85 (Inverter)									1.8	3.8	4.5
 m/l' KW	▶									▶		
	26									26		
	1.5									1.5		
 rpm KW	▶			▶▶			▶▶▶			▶	▶▶	▶▶▶
	0.3			0.6			0.9			0.3	0.6	0.9
	1.1 (Inverter)									1.1 (Inverter)		
 min KW	▶									▶		
	6									6		
	2.2									2.2		
 kg	5950									5950		



VANSON VC 20



STANDARD FEATURES

3-speed lifting and rotation with electronic control, galvanised structure, installation counterweight, pull-up modular jib, translation trolley, operation with folded jib, cable-operated pushbutton remote control, guard for slewing ring and mechanisms, designed to allow installation of self-ballasting device and radio control, stainless steel electrical cabinet, documentation in accordance with EU standards.

VANSON CRANES LIMITED

Honey Pot Lane, Colsterworth, Grantham, Lincolnshire. NG33 5LY.

Telephone: +44 (0) 1476 861011 Fax: +44 (0) 1476 861014

E-mail: sales@vansoncranes.com Website: www.vansoncranes.com

February 2007