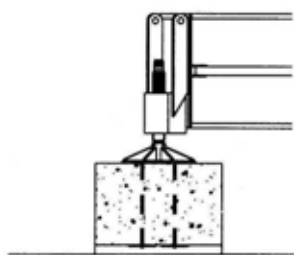
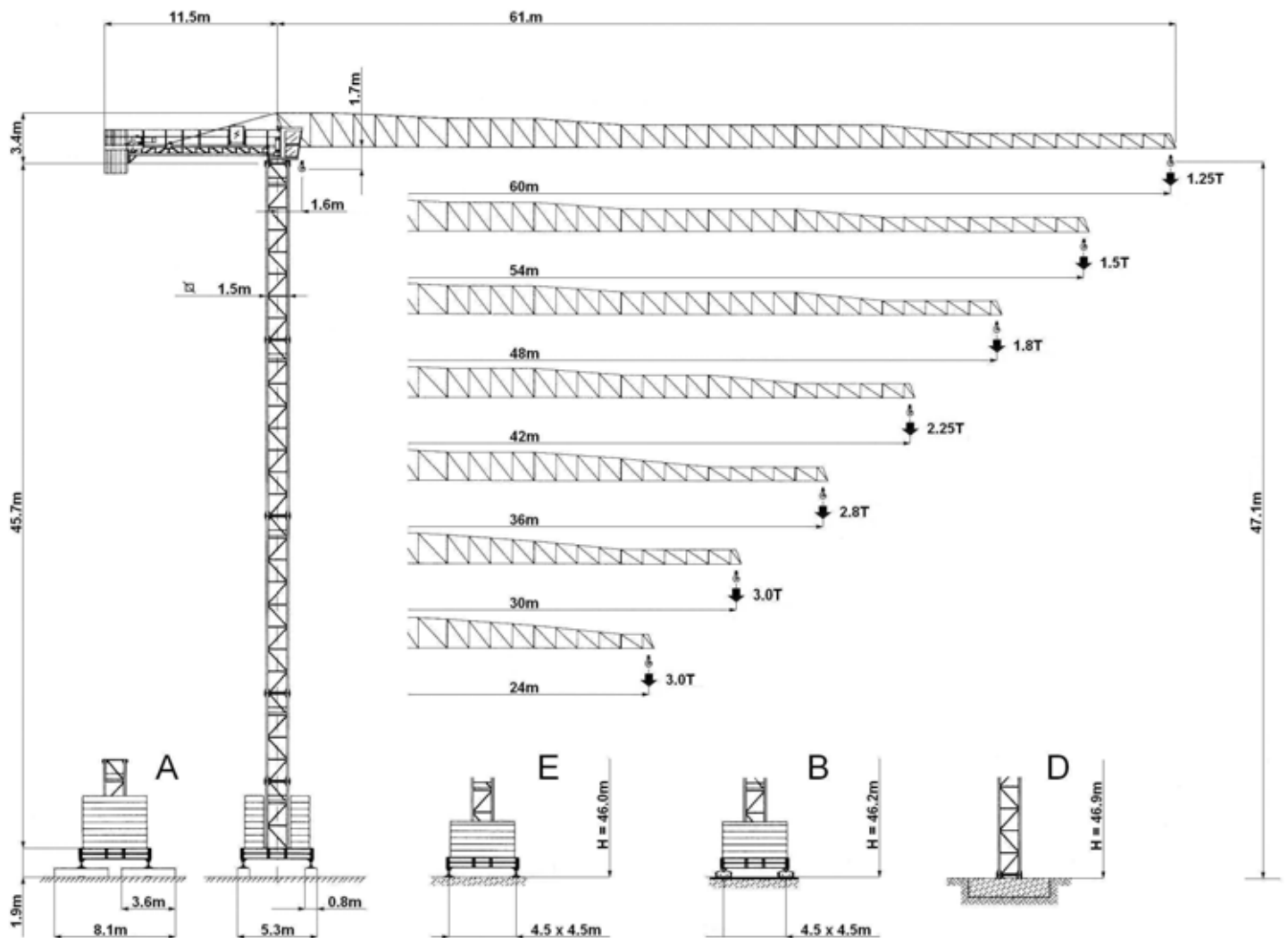


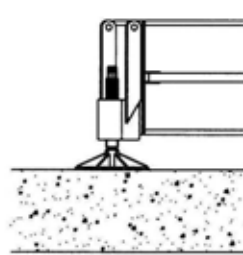
RAIVAN

# MR99+3

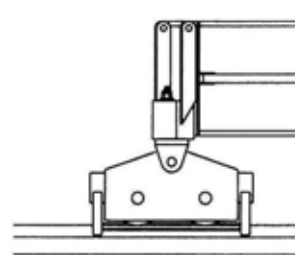
FLAT TOP CITY TOWER CRANE



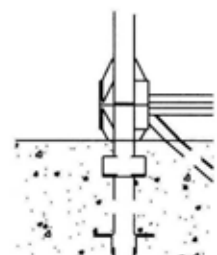
A



E


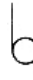



B



D

## RADIUS AND S.W.L.

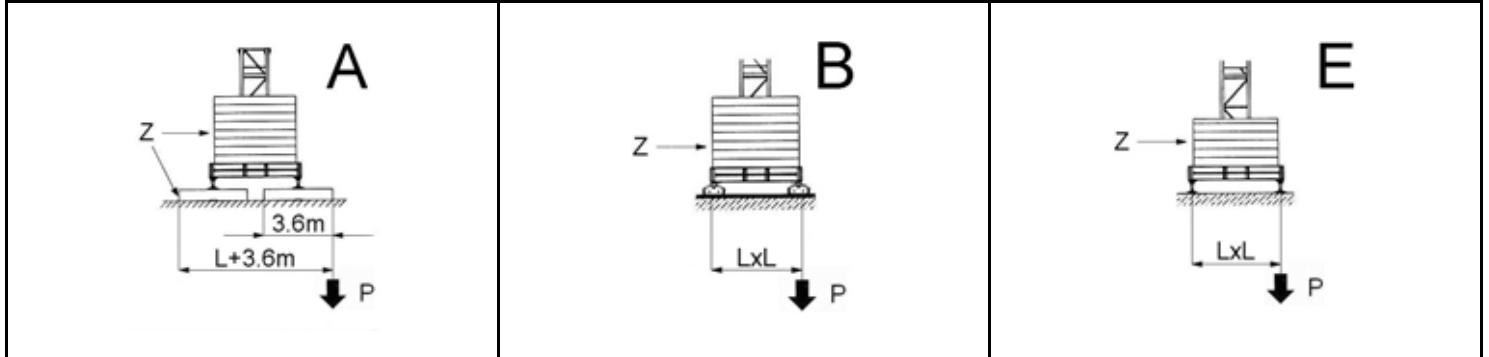
Max s.w.l.		3000kg 							6000  / 3000kg 						
Jib	m	24	30	36	42	48	54	60	24	30	36	42	48	54	60
Max s.w.l. from 1.5m	to	24.0	30.0	34.4	33.2	32.2	30.5	28.5	18.6	18.5	18.4	17.9	17.5	16.8	15.8
Radius (m)	14	3000	3000	3000	3000	3000	3000	3000	6000	6000	6000	6000	6000	6000	6000
	16	3000	3000	3000	3000	3000	3000	3000	6000	6000	6000	6000	6000	6000	5935
	18	3000	3000	3000	3000	3000	3000	3000	6000	6000	6000	5967	5814	5537	5188
	20	3000	3000	3000	3000	3000	3000	3000	5540	5506	5458	5295	5157	4909	4597
	22	3000	3000	3000	3000	3000	3000	3000	4971	4940	4896	4749	4624	4399	4116
	24	3000	3000	3000	3000	3000	3000	3000	4500	4471	4431	4297	4183	3977	3719
	26		3000	3000	3000	3000	3000	3000		4077	4040	3916	3811	3622	3384
	28		3000	3000	3000	3000	3000	3000		3740	3707	3592	3494	3319	3098
	30		3000	3000	3000	3000	3000	2828		3450	3418	3311	3221	3057	2852
	32			3000	3000	3000	2844	2628			3167	3067	2982	2829	2637
	34			3000	2923	2821	2656	2453			2946	2852	2772	2628	2447
	36			2800	2740	2645	2489	2297			2750	2661	2586	2450	2280
	38				2578	2487	2340	2159				2491	2420	2292	2130
	40				2432	2346	2206	2034				2338	2271	2149	1996
	42				2300	2218	2085	1921				2200	2136	2020	1874
	44					2102	1975	1819					2014	1903	1764
	46					1997	1875	1726					1902	1796	1663
	48					1900	1783	1641					1800	1699	1571
	50						1699	1562						1609	1487
	52						1622	1490						1526	1409
54						1550	1423						1450	1337	
56							1361							1270	
58							1304							1208	
60							1250							1150	

## JIB AND COUNTERWEIGHT

Jib	(m)	24	30	36	42	48	54	60
Counterweight	(t)	4.262	5.946	8.077	10.208	11.892	14.023	16.154
Composition	Type	Quantity						
	A99+3	2	2	3	4	4	5	6
	B99+3	-	1	1	1	2	2	2

# VANSON

## H.U.H., MAX. BASE BALLAST AND CORNER PRESSURE



### ON CROSSBASE

L = 4.5m

H (m)	max. Z (t)	P (kN)	H (m)	max. Z (t)	P (kN)	H (m)	max. Z (t)	P (kN)
19.10	33.40	319	18.20	35.40	328	18.50	35.40	325
22.05	33.40	329	21.15	35.40	336	21.45	35.40	333
25.00	33.40	339	24.10	35.40	346	24.40	35.40	343
30.90	33.40	363	30.00	41.30	381	30.30	41.30	378
36.80	45.20	430	35.90	41.30	413	36.20	41.30	414
42.70	62.90	596	41.80	59.00	572	42.10	59.00	581
47.10	68.80	744	46.20	64.90	714	46.50	64.90	723

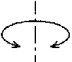
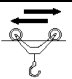
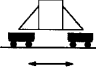
### ON CROSSBASE

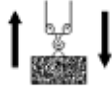


L = 3.8m

H (m)	max. Z (t)	P (kN)	H (m)	max. Z (t)	P (kN)	H (m)	max. Z (t)	P (kN)
19.10	51.10	393	18.20	47.20	384	18.20	47.20	382
22.05	51.10	403	21.15	47.20	394	21.45	47.20	392
25.00	51.10	414	24.10	47.20	405	24.40	47.20	403
30.90	57.00	452	30.00	53.10	443	30.30	53.10	441
36.80	62.90	514	35.90	59.00	495	36.20	59.00	498
42.70	80.60	722	41.80	76.70	688	42.10	76.70	700

## STATIONARY

	H (m)	17.4	23.3	29.2	35.1	41.0	46.9		H (m)	55.7
	T (kN)	175	173	273	538	793	1091		T (kN)	1553
	P (kN)	340	349	462	743	1013	1328		P (kN)	1782
	q <sub>max</sub> (kg/cm <sup>2</sup> )	0.70	0.84	0.90	0.98	1.31	1.86		q <sub>max</sub> (kg/cm <sup>2</sup> )	1.70

		Speed	Power
Slewing		0.23 / 0.47 / 0.71 m/min	2 x 4 Kw
Trolley		18.8 / 35.2 / 54 m/min Progressive	3.6 Kw
Rail		18 m/min	2 x 3 Kw

Winch		Step	Load / speed	
				
Type	25 HP 18.4 Kw - 6	1	3000 kg - 7.5 m/min	6000 kg - 3.7 m/min
		2	3000 kg - 30 m/min	6000 kg - 15 m/min
		3	1500 kg - 60 m/min	3000 kg - 30 m/min
		1	3000 kg - 9.4 m/min	6000 kg - 4.7 m/min
		2	3000 kg - 37.5 m/min	6000 kg - 18.8 m/min
		3	1500 kg - 75 m/min	3000 kg - 37.5 m/min
	25 HP 18.4 Kw - 6VF INVERTER	1	3000 kg - 6 m/min	6000 kg - 3 m/min
		2	3000 kg - 30 m/min	3000 kg - 15 m/min
		3	1500 kg - 60 m/min	3000 kg - 30 m/min
			1000 kg - 72 m/min	2000 kg - 36 m/min
		1	3000 kg - 7.5 m/min	6000 kg - 3.7 m/min
		2	3000 kg - 37.5 m/min	6000 kg - 18.8 m/min
33 HP 24.3 Kw - 6VF INVERTER	3	1500 kg - 75 m/min	3000 kg - 37.5 m/min	
		1000 kg - 90 m/min	2000 kg - 45 m/min	

In compliance with the EEC 84/534 instruction on noise level

Total Installed Power	18.4 Kw (25 HP)	24.3 Kw (33 HP)
	36 Kw	42 Kw

## ASSEMBLING SEQUENCE

