

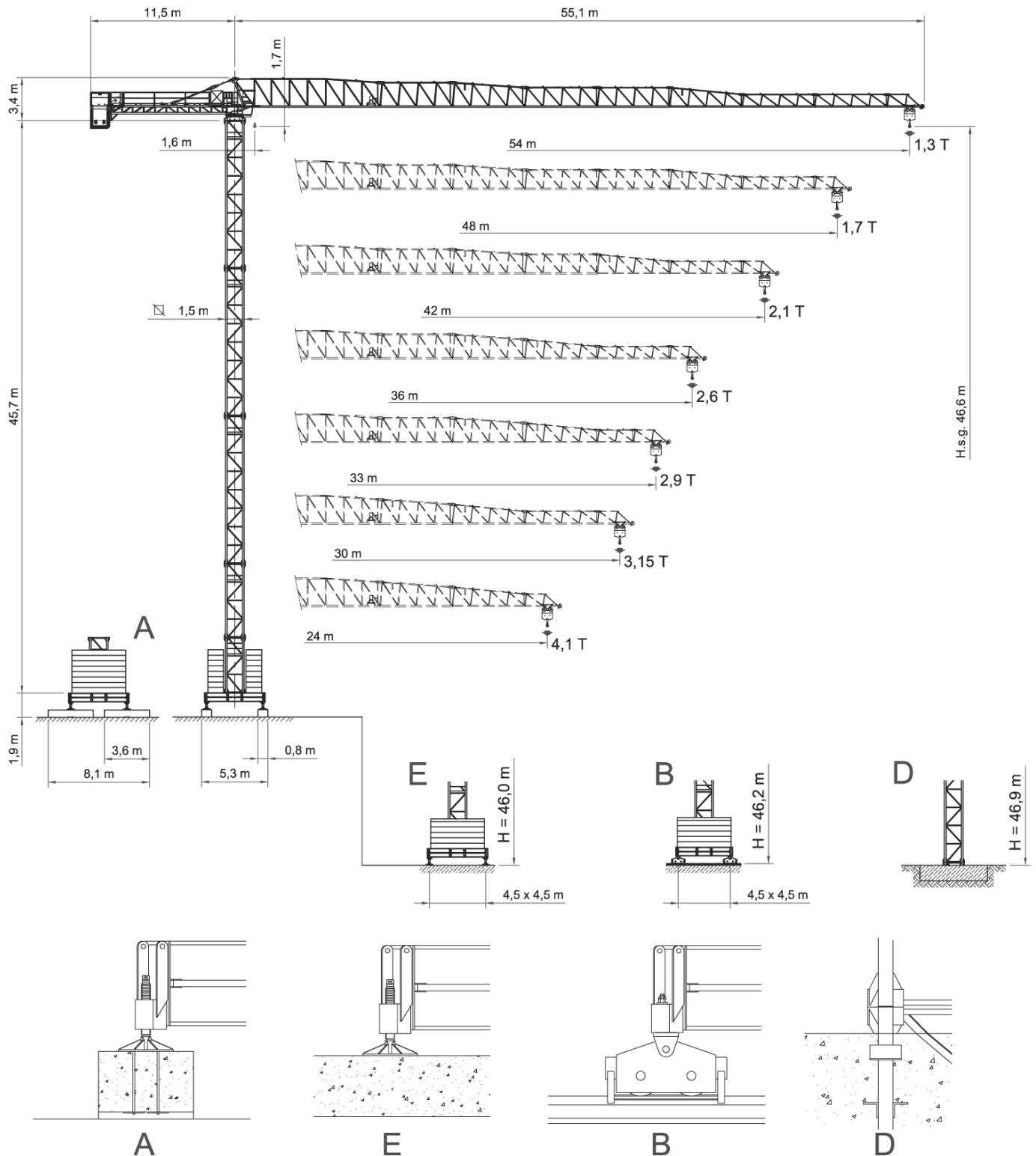
RAIVAN

MR93+3

FLAT TOP CITY TOWER CRANE






A3 FEM1,001



VANSON

RADIUS AND S.W.L.

Max s.w.l.		3000 kg 							6000 kg  / 3000 kg 						
Radius	m	24	30	33	36	42	48	54	24	30	33	36	42	48	54
Max s.w.l. from 1.6m	to	24.0	33.0	32.6	32.1	30.2	29.8	26.5	17.8	17.4	17.5	19.1	16.2	15.9	14.0
Radius (m)	12	3000	3000	3000	3000	3000	3000	3000	6000	6000	6000	6000	6000	6000	6000
	14	3000	3000	3000	3000	3000	3000	3000	6000	6000	6000	6000	6000	6000	6000
	16	3000	3000	3000	3000	3000	3000	3000	6000	6000	6000	6000	6000	5855	5258
	18	3000	3000	3000	3000	3000	3000	3000	5674	5638	5606	6000	5378	5127	4599
	20	3000	3000	3000	3000	3000	3000	3000	5041	5008	4980	5555	4775	4550	4077
	22	3000	3000	3000	3000	3000	3000	3000	4526	4497	4471	4933	4235	4082	3653
	24	3000	3000	3000	3000	3000	3000	3000	4100	4073	4050	4424	3880	3694	3302
	26		3000	3000	3000	3000	3000	3000		3717	3695	4011	3539	3368	3006
	28		3000	3000	3000	3000	3000	2854		3413	3392	3360	3248	3089	2754
	30		3000	3000	3000	3000	2949	2637		3150	3131	3101	2996	2849	2537
	32			3000	3000	2877	2739	2437			2903	2875	2777	2639	2437
	33			2900	2872	2778	2644	2361			2800	2772	2678	2544	2261
	34				2776	2684	2554	2280				2676	2584	2454	2180
	36				2600	2513	2391	2132				2500	2413	2291	2032
	38					2361	2245	2000					2261	2145	1900
	40					2224	2114	1881					2124	2014	1781
	42					2100	1995	1774					2000	1895	1674
	44						1888	1677						1788	1577
	46						1790	1588						1690	1488
	48						1700	1507						1600	1407
50							1432							1332	
52							1364							1264	
54							1300							1200	

All intermediate loads are increased of 10% if the crane is equipped with "ULTRALIFT" control

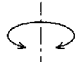
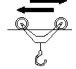

Total Installed Power	24.3 Kw (33 HP)	37 Kw (50 HP)
	36 Kw	42 Kw



In compliance with the 2000/14/CE instruction on noise level

RAIVAN MR93+3

FLAT TOP CITY TOWER CRANE

GENERAL TECHNICAL CHARACTERISTICS

		Speed	Power
Slewing		0.23 / 0.47 / 0.71 m/min (-1)	2 x 4 Kw
Trolley		18.8 / 35.2 / 54 m/min Progressive	3.6 Kw
Rail		18 m/min	2 x 3 Kw

Winch Type	Power		Rope (m)	Step	Load / speed	
	CV - ch PS - hp	kW				
25 HP - 6	25	18.4	190	1	3000 kg - 7.5 m/min	6000 kg - 3.7 m/min
				2	3000 kg - 30 m/min	6000 kg - 15 m/min
				3	1500 kg - 60 m/min	3000 kg - 30 m/min
33 HP - 6	33	24.3	234	1	3000 kg - 9.4 m/min	6000 kg - 4.7 m/min
				2	3000 kg - 37.5 m/min	6000 kg - 18.8 m/min
				3	1500 kg - 75 m/min	3000 kg - 37.5 m/min
25 HP - 6 VF	25	18.4	190	1	3000 kg - 6 m/min	6000 kg - 3 m/min
				2	3000 kg - 30 m/min	3000 kg - 15 m/min
				3	1500 kg - 60 m/min	3000 kg - 30 m/min
				4	1000 kg - 72 m/min	2000 kg - 36 m/min
33 HP - 6 VF	33	24.3	234	1	3000 kg - 7.5 m/min	6000 kg - 3.7 m/min
				2	3000 kg - 37.5 m/min	6000 kg - 18.8 m/min
				3	1500 kg - 75 m/min	3000 kg - 37.5 m/min
				4	1000 kg - 90 m/min	2000 kg - 45 m/min

In compliance with the 2000/14/CE instruction on noise level

HEIGHT UNDER HOOK

□ 1,5m - L=3,8m

□ 1,5m

H (m)	Z (t)	F1 (kN)	H (m)	Z (t)	F1 (kN)	H (m)	Z (t)	F1 (kN)	H (m)	Z (t)	F1 (kN)
7	-	-	7	-	-	7	-	-	7	-	-
6	-	-	6	-	-	6	-	-	6	46,9	1328
5	42,2	80,6	5	41,8	76,7	5	41,6	76,7	5	41,0	1013
4	36,3	62,9	4	35,9	59,0	4	35,7	59,0	4	35,1	743
3	30,4	57,0	3	30,0	53,1	3	29,8	53,1	3	29,2	610
2	24,5	51,1	2	24,1	47,2	2	23,9	47,2	2	23,3	545
5,9m +1	18,6	51,1	5,9m +1	18,2	47,2	5,9m +1	18,0	47,2	5,9m +1	17,4	490

□ 1,5m - L=4,5m

□ 1,5m

H (m)	Z (t)	F1 (kN)	H (m)	Z (t)	F1 (kN)	H (m)	Z (t)	F1 (kN)	H (m)	F2 (kN)	F3 (kN)
7	-	-	7	-	-	7	-	-	7	55,7	1762
6	46,6	68,8	6	46,2	64,9	6	46,0	64,9	6		
5	42,2	62,9	5	41,8	59,0	5	41,6	59,0	5		
4	36,3	45,2	4	35,9	41,3	4	35,7	41,3	4		
3	30,4	33,4	3	30,0	41,3	3	29,8	41,3	3		
2	24,5	33,4	2	24,1	35,4	2	23,9	35,4	2		
5,9m +1	18,6	33,4	5,9m +1	18,2	35,4	5,9m +1	18,0	35,4	5,9m +1		

□ 1,7/1,5m - L=4,5m

□ 1,7/1,5m - L=6,0m

□ 1,5/1,7m

H (m)	Z (t)	F1 (kN)	H (m)	Z (t)	F1 (kN)	H (m)	F2 (kN)	F3 (kN)
6	54,3	94,4	6	54,4	59	7	55,7	1835
5			5			6		
4			4			5		
3			3			4		
2			2			3		
5,9m +1			5,9m +1			2		