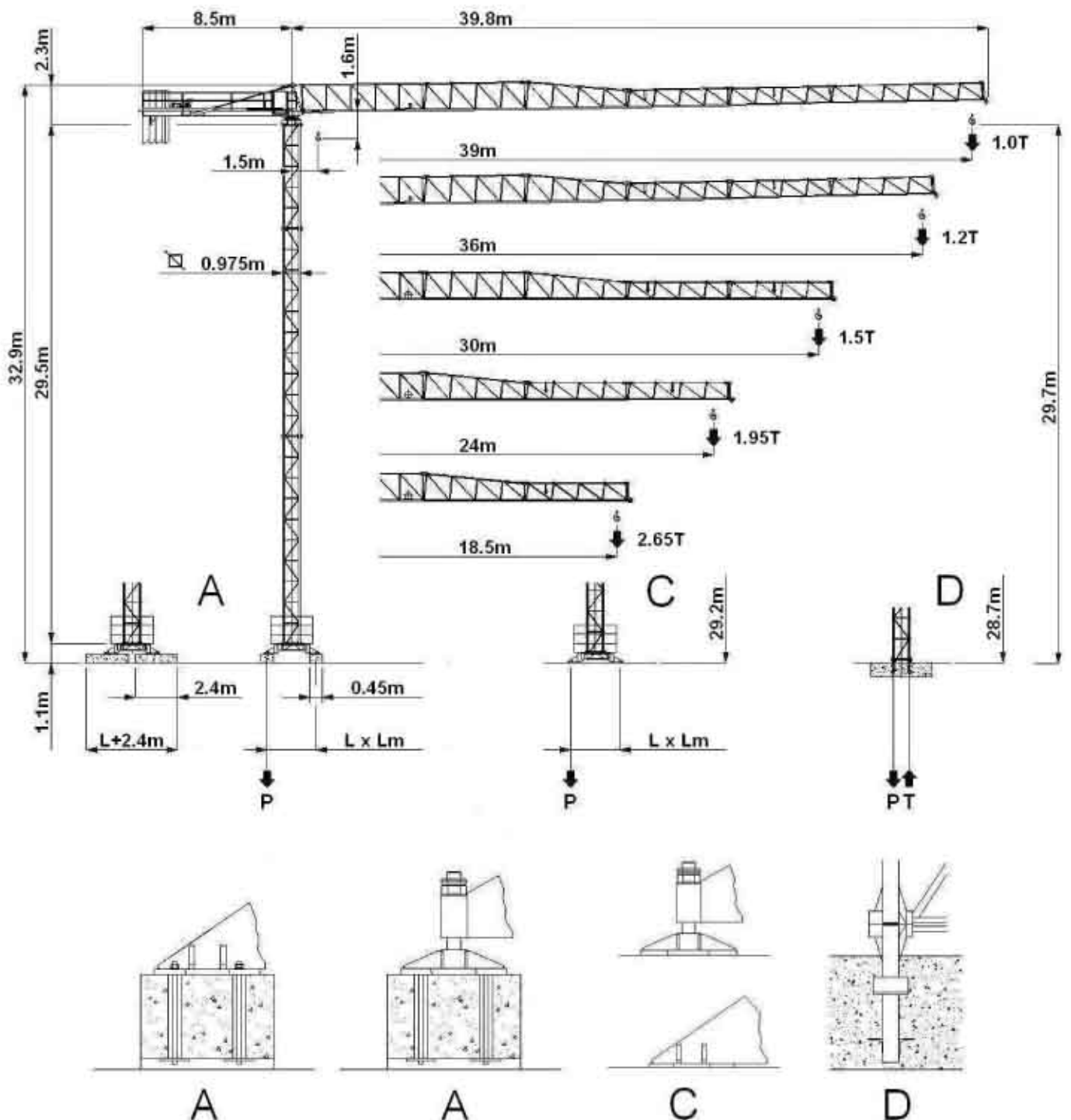


RAIVAN

MR39+3



FLAT TOP CITY TOWER CRANE



RAIVAN MR39+3



FLAT TOP CITY TOWER CRANE





RADIUS AND S.W.L.

Max s.w.l.		2000kg 					4000kg 				
Jib	m	18	24	30	36	39	18	24	30	36	39
Max s.w.l. from 1.5m	to	18.0	23.5	23.1	22.7	21.0	12.3	12.1	11.8	11.6	10.3
Radius (m)	8	2000	2000	2000	2000	2000	4000	4000	4000	4000	4000
	10	2000	2000	2000	2000	2000	4000	4000	4000	4000	4000
	12	2000	2000	2000	2000	2000	4000	4000	3945	3845	3508
	14	2000	2000	2000	2000	2000	3430	3415	3337	3251	2965
	16	2000	2000	2000	2000	2000	3011	2955	2886	2812	2563
	18	2000	2000	2000	2000	2000	2650	2600	2540	2474	2253
	20		2000	2000	2000	2000		2319	2264	2206	2008
	22		2000	2000	2000	1896		2090	2041	1937	1808
	24		1950	1918	1882	1724		1900	1855	1806	1642
	26			1757	1724	1578			1699	1654	1503
	28			1619	1588	1454			1565	1524	1384
	30			1500	1471	1346			1450	1411	1281
	32				1389	1252				1313	1191
	34				1280	1169				1227	1112
36				1200	1096				1150	1042	
39					1000					950	

A - L=3.2m			A - L=2.8m			C - L=3.2m			C - L=2.8m			D		
H (m)	Z (t)	P (KN)	H (m)	Z (t)	P (KN)	H (m)	Z (t)	P (KN)	H (m)	Z (t)	P (KN)	H (m)	T (KN)	P (KN)
29.7	28	234	29.7	32	268	29.2	28	233	29.2	32	266	28.7	363	470
23.8	24	206	23.8	28	235	23.3	24	207	23.3	28	234	22.8	315	413
17.9	24	189	17.9	28	216	17.4	24	189	17.4	28	211	16.9	273	375

RADIUS AND S.W.L.

		Speed		Power	
	0.3	r.p.m	4.2 HP 3.0 KW		
	0.6				
	1.0				
	20	m/min	1.5/8 HP 1.1/2.2 KW		
	40	m/min			

Hoisting winch					
Load/Speed					
10 HP (7.35 KW)			15 HP (11 KW)		
	1	2000 kg - 4.5 m/min		1	2000 kg - 6.25 m/min
	2	2000 kg - 18 m/min		2	2000 kg - 25 m/min
	3	1000 kg - 36 m/min		3	2000 kg - 50 m/min
	1	4000 kg - 2.25 m/min		1	4000 kg - 3.1 m/min
	2	4000 kg - 9 m/min		2	4000 kg - 12.5 m/min
	3	2000 kg - 18 m/min		3	2000 kg - 25 m/min

ASSEMBLING SEQUENCE

