

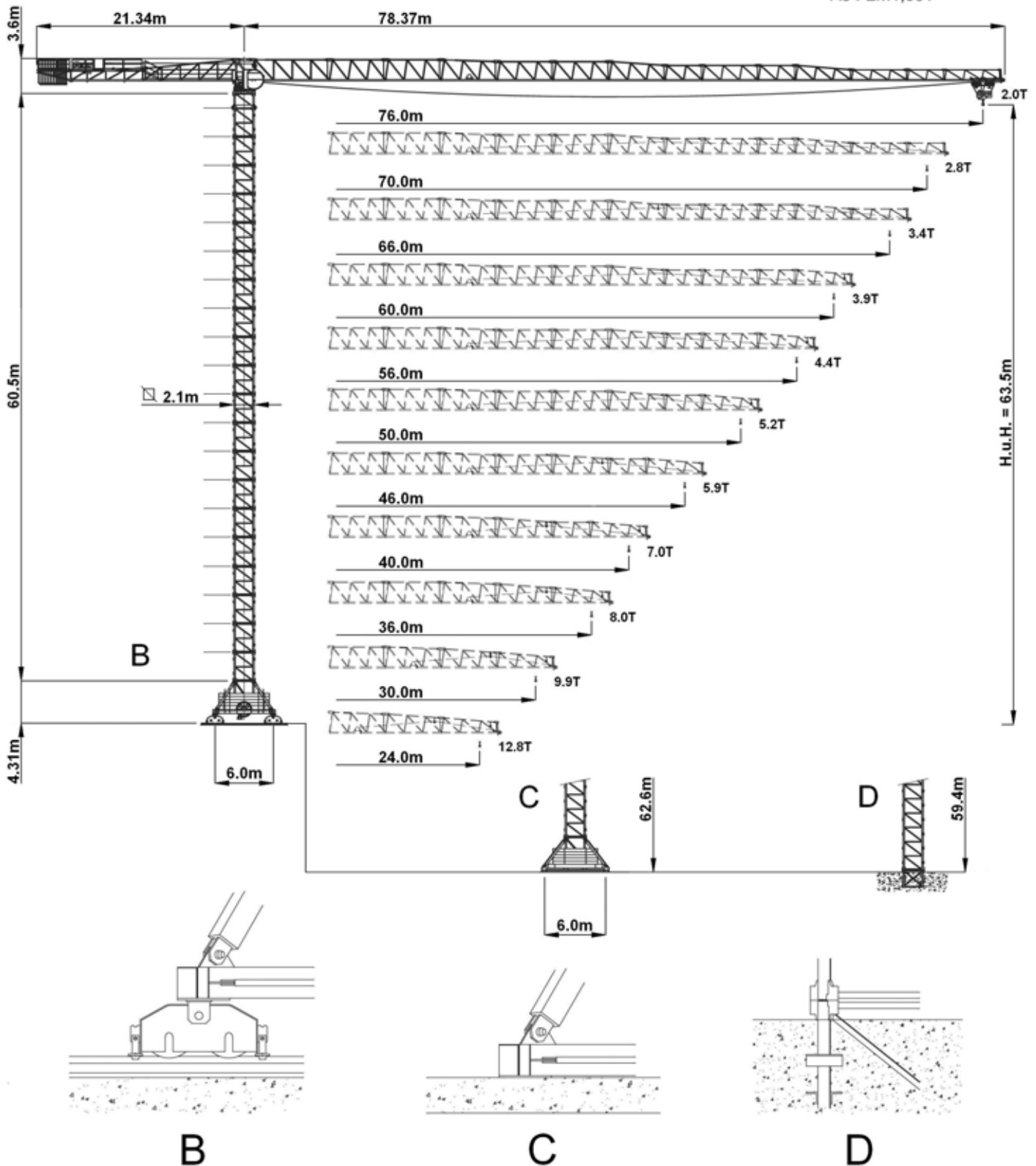
RAIVAN

MR240+3

FLAT TOP CITY TOWER CRANE








A3 FEM1,001



VANSON

RADIUS AND S.W.L.

Max s.w.l.		14000 kg  / 7000 kg 										16000 kg  / 8000 kg 									
Radius	m	36	40	46	50	56	60	66	70	76	36	40	46	50	56	60	66	70	76		
Max s.w.l. from 2.8m	to	22.2	21.5	21.1	20.6	20.1	19.6	19.3	17.7	15.5	19.3	18.7	18.5	18.0	17.6	17.1	16.8	15.4	13.1		
Radius (m)		13	14000	14000	14000	14000	14000	14000	14000	14000	14000	16000	16000	16000	16000	16000	16000	16000	16000	16000	
		15	14000	14000	14000	14000	14000	14000	14000	14000	14000	16000	16000	16000	16000	16000	16000	16000	16000	16000	13689
		16	14000	14000	14000	14000	14000	14000	14000	14000	13448	16000	16000	16000	16000	16000	16000	16000	16000	15268	12698
		18	14000	14000	14000	14000	14000	14000	14000	13740	11728	16000	16000	16000	16000	15567	15049	14787	13334	11066	
		20	14000	14000	14000	14000	14000	13652	13449	12170	10370	15357	14784	14364	14233	13804	13341	13107	11807	9777	
		22	14000	13635	13342	12999	12640	12240	12056	10899	9270	13783	13264	13128	12766	12378	11959	11747	10570	8734	
		24	12787	12347	12080	11767	11438	11073	10906	9849	8362	12482	12008	11884	11554	11199	10817	10623	9549	7873	
		26	11670	11266	11020	10732	10429	10093	9939	8967	7599	11390	10954	10840	10536	10209	9857	9679	8691	7149	
		28	10718	10344	10116	9850	9570	9259	9116	8216	7000	10459	10055	9950	9688	9366	9040	8875	7946	6532	
		30	9898	9550	9338	9089	8829	8539	8406	7568	7000	9657	9281	9182	8920	8639	8336	8182	7351	6001	
		32	9184	8858	8659	8427	8183	7912	7788	7004	6506	8958	8606	8514	8269	8006	7839	7657	6834	5538	
		34	8556	8250	8063	7845	7616	7362	7245	7000	6040	8344	8014	8000	7899	7615	7324	7152	6379	5131	
		36	8000	7711	7536	7330	7114	7000	7000	6661	5628	8000	7654	7649	7409	7141	6867	6705	5976	4771	
		38		7231	7065	7000	7000	6917	6862	6237	5260		7204	7199	6972	6719	6459	6306	5617	4449	
	40		7000	6988	6834	6687	6502	6450	5857	4930		6800	6796	6580	6340	6093	5948	5294	4178		
	42			6590	6444	6303	6128	6078	5514	4633			6431	6226	5998	5763	5625	5003	3942		
	44			6229	6089	5956	5788	5740	5203	4362			6101	5905	5688	5464	5332	4739	3727		
	46			5900	5767	5639	5479	5433	4920	4116			5800	5613	5405	5191	5065	4499	3532		
	48				5471	5349	5196	5152	4660	3891				5346	5146	4942	4821	4279	3353		
	50				5200	5083	4936	4894	4422	3684				5100	4909	4713	4597	4076	3188		
	52					4837	4696	4656	4203	3494					4690	4502	4390	3890	3037		
	54					4610	4474	4436	4000	3318					4488	4306	4199	3718	2897		
	56					4400	4269	4232	3812	3154					4300	4125	4022	3558	2767		
	58						4078	4042	3637	3002						3957	3858	3410	2647		
	60						3900	3865	3474	2861							3800	3704	3272	2534	
	62							3700	3321	2729								3560	3142	2429	
	64							3545	3179	2605								3426	3021	2330	
	66							3400	3045	2488								3300	2908	2238	
	68								2919	2379									2801	2151	
	70								2800	2276									2700	2069	
	72									2179										1992	
	74									2087										1919	
	76									2000										1850	

All intermediate loads are increased of 10% if the crane is equipped with "ULTRALIFT" control

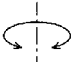
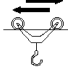

Total Installed Power	11 Kw (15 HP)	18.4 Kw (25 HP)
	24 Kw	32 Kw



In compliance with the 2000/14/CE instruction on noise level

RAIVAN MR240+3

FLAT TOP CITY TOWER CRANE

GENERAL TECHNICAL CHARACTERISTICS

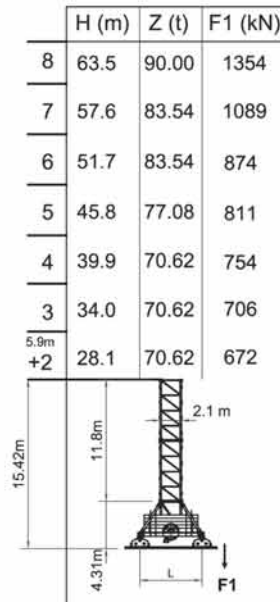
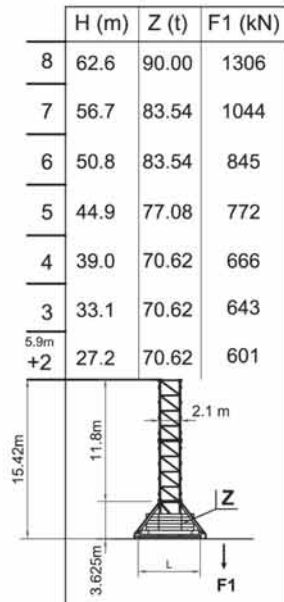
		Speed	Power
Slewing		0.37 / 0.7 / 1.0 m/min (-1)	4.0 Kw
Trolley		13 / 37 / 59 m/min Progressive	3.6 Kw
Rail		14 m/min	2 x 2.9 Kw

Winch Type	Power		Rope (m)	Step	Load / speed	
	CV - ch PS - hp	kW				
66 HP - 14VF	65.3	48	446	1	7000 kg - 4 m/min	14000 kg - 2 m/min
				2	7000 kg - 17 m/min	14000 kg - 8.5 m/min
				3	7000 kg - 31 m/min	14000 kg - 16 m/min
				4	4503 kg - 48 m/min	9006 kg - 24 m/min
				5	3314 kg - 64 m/min	6628 kg - 32 m/min
66 HP - 14HVF	65.3	48	855	1	7000 kg - 3 m/min	14000 kg - 1.5 m/min
				2	7000 kg - 17 m/min	14000 kg - 8.5 m/min
				3	7000 kg - 32 m/min	14000 kg - 16 m/min
				4	5205 kg - 44 m/min	10410 kg - 22 m/min
				5	3958 kg - 56 m/min	7916 kg - 28 m/min
66 HP - 16VF	65.3	48	664	1	8000 kg - 4 m/min	16000 kg - 2 m/min
				2	8000 kg - 16 m/min	16000 kg - 8 m/min
				3	8000 kg - 28 m/min	16000 kg - 14 m/min
				4	5203 kg - 44 m/min	10406 kg - 22 m/min
				5	3843 kg - 58 m/min	7686 kg - 29 m/min
66 HP - 16HVF	65.3	48	889	1	8000 kg - 3 m/min	16000 kg - 1.5 m/min
				2	8000 kg - 15 m/min	16000 kg - 7.5 m/min
				3	8000 kg - 29 m/min	16000 kg - 14.5 m/min
				4	7355 kg - 42 m/min	14710 kg - 21 m/min
				5	3958 kg - 56 m/min	7916 kg - 28 m/min
100 HP - 14VF	104.5	76.83	518	1	7000 kg - 7 m/min	14000 kg - 3.5 m/min
				2	7000 kg - 28 m/min	14000 kg - 14 m/min
				3	7000 kg - 50 m/min	14000 kg - 25 m/min
				4	3800 kg - 89 m/min	7600 kg - 44.5 m/min
				5	2214 kg - 131 m/min	4428 kg - 65 m/min
100 HP - 14HVF	104.5	76.83	755	1	7000 kg - 7 m/min	14000 kg - 3.5 m/min
				2	7000 kg - 29 m/min	14000 kg - 15 m/min
				3	7000 kg - 52 m/min	14000 kg - 26 m/min
				4	3678 kg - 92 m/min	7356 kg - 46 m/min
				5	2138 kg - 135 m/min	4276 kg - 67 m/min
100 HP - 16VF	104.5	76.83	518	1	8000 kg - 4 m/min	16000 kg - 2 m/min
				2	8000 kg - 24 m/min	16000 kg - 12 m/min
				3	8000 kg - 43 m/min	16000 kg - 22 m/min
				4	5341 kg - 62 m/min	10682 kg - 31 m/min
				5	3905 kg - 79 m/min	7810 kg - 39 m/min
100 HP - 16HVF	104.5	76.83	855	1	8000 kg - 4 m/min	16000 kg - 2 m/min
				2	8000 kg - 24 m/min	16000 kg - 12 m/min
				3	8000 kg - 43 m/min	16000 kg - 22 m/min
				4	5341 kg - 62 m/min	10682 kg - 31 m/min
				5	3905 kg - 79 m/min	7810 kg - 39 m/min

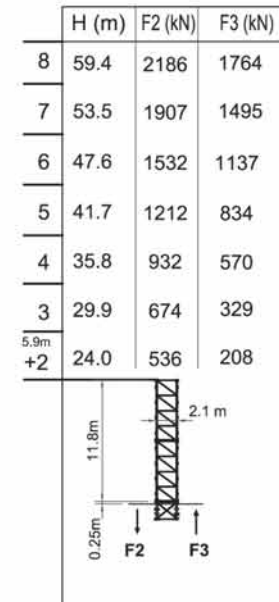
In compliance with the 2000/14/CE instruction on noise level

HEIGHT UNDER HOOK

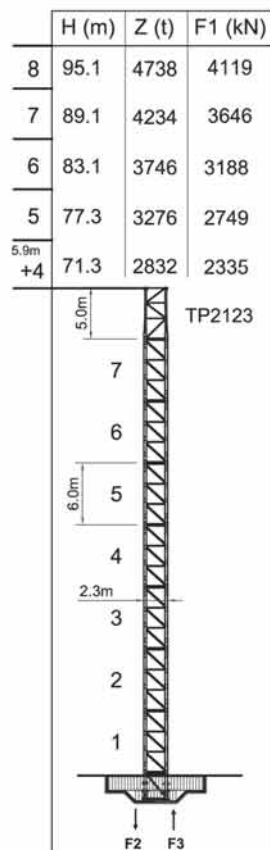
2.1 - L=6m



2.1



2,1/2,3



2,1

