

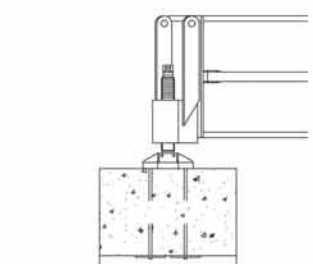
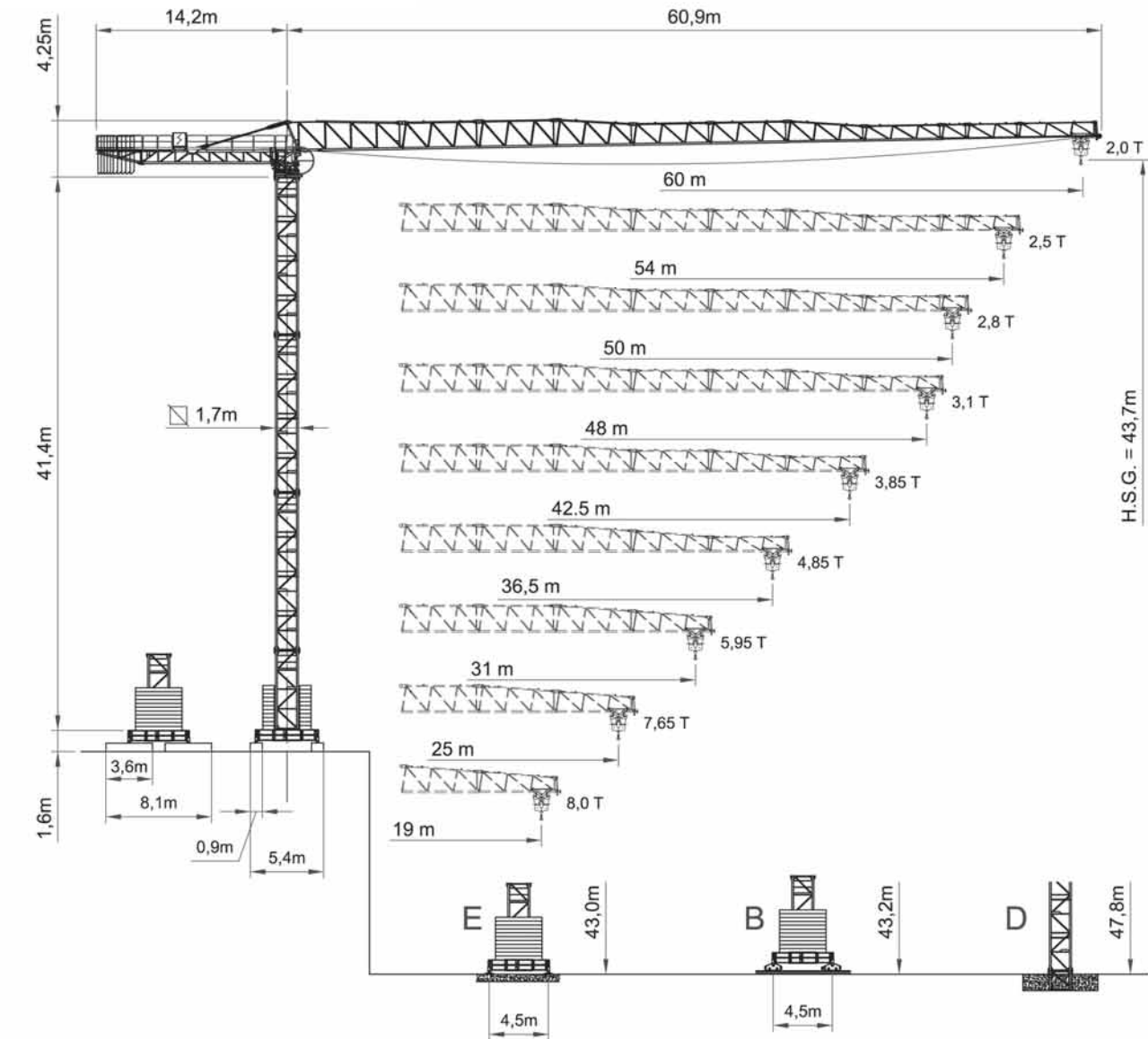
RAIVAN

MR177+3

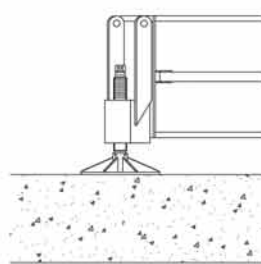
FLAT TOP CITY TOWER CRANE



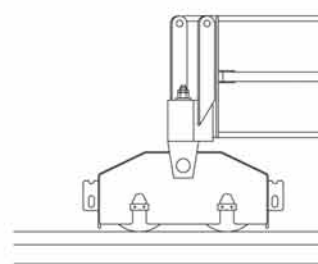
A3 FEM1,001



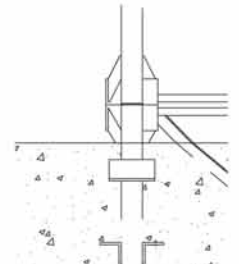
A



E




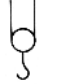
B



D

VANSON

RADIUS AND S.W.L.

Max s.w.l.		8000 kg  / 4000 kg 									
Radius	m	19	25	31	36.5	42.5	48	50	54	60	
Max s.w.l. from 1.7m to		19.0	24.0	23.9	23.6	22.7	21.5	20.7	20.5	19.3	
Radius (m)	10	8000	8000	8000	8000	8000	8000	8000	8000	8000	
	12	8000	8000	8000	8000	8000	8000	8000	8000	8000	
	14	8000	8000	8000	8000	8000	8000	8000	8000	8000	
	16	8000	8000	8000	8000	8000	8000	8000	8000	8000	
	19	8000	8000	8000	8000	8000	8000	8000	8000	8000	
	21		8000	8000	8000	8000	8000	8000	7875	7782	7273
	23		8000	8000	8000	8000	7880	7418	7097	7013	6550
	25			7650	7610	7506	7166	6743	6449	6372	5947
	27				6972	6876	6562	6172	5900	5829	5436
	29				6424	6336	6044	5681	5429	5363	4999
	31				5950	5867	5595	5256	5021	4959	4619
	34					5270	5023	4715	4501	4444	4135
	36.5					4850	4620	4333	4134	4082	3794
	38						4404	4129	3938	3888	3612
	40						4142	3881	3700	3652	3390
	42.5						3850	3605	3434	3390	3144
	44							3454	3290	3247	3009
	46							3269	3112	3071	2844
	48							3100	2949	2910	2693
	50								2800	2762	2554
52									2626	2426	
54									2500	2307	
56										2197	
58										2095	
60										2000	

All intermediate loads are increased of 10% if the crane is equipped with "ULTRALIFT" control


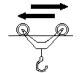

Total Installed Power	24.3 Kw (33 HP)	37 Kw (50 HP)
	46 Kw	59 Kw



In compliance with the 2000/14/CE instruction on noise level

RAIVAN MR177+3

FLAT TOP CITY TOWER CRANE

GENERAL TECHNICAL CHARACTERISTICS

		Speed	Power
Slewing		0.26 / 0.48 / 0.7 m/min (-1)	2 x 4 Kw
Trolley		18.8 / 35.2 / 54 m/min Progressive	5.5 Kw
Rail		20 m/min	2 x 4 Kw

Winch Type	Power		Rope (m)	Step	Load / speed	
	CV - ch PS - hp	kW				
33 HP - 8 VF	33	24.3	193	1	4000 kg - 5.6 m/min	8000 kg - 2.8 m/min
				2	4000 kg - 28 m/min	8000 kg - 14 m/min
				3	2000 kg - 56 m/min	4000 kg - 28 m/min
				4	1300 kg - 67 m/min	2600 kg - 33.6 m/min
50 HP - 8 VF	50	36.8	305	1	4000 kg - 6 m/min	8000 kg - 5 m/min
				2	4000 kg - 24 m/min	8000 kg - 14 m/min
				3	4000 kg - 45 m/min	8000 kg - 23 m/min
				4	2594 kg - 68 m/min	5188 kg - 38 m/min
				5	1827 kg - 92 m/min	3654 kg - 49 m/min
50 HP - 8 HVF	50	36.8	796	1	4000 kg - 5 m/min	8000 kg - 2.5 m/min
				2	4000 kg - 23 m/min	8000 kg - 11.5 m/min
				3	4000 kg - 43 m/min	8000 kg - 21.5 m/min
				4	2748 kg - 64 m/min	5496 kg - 32 m/min
				5	1940 kg - 87 m/min	3880 kg - 43.5 m/min

In compliance with the 2000/14/CE instruction on noise level

HEIGHT UNDER HOOK

