

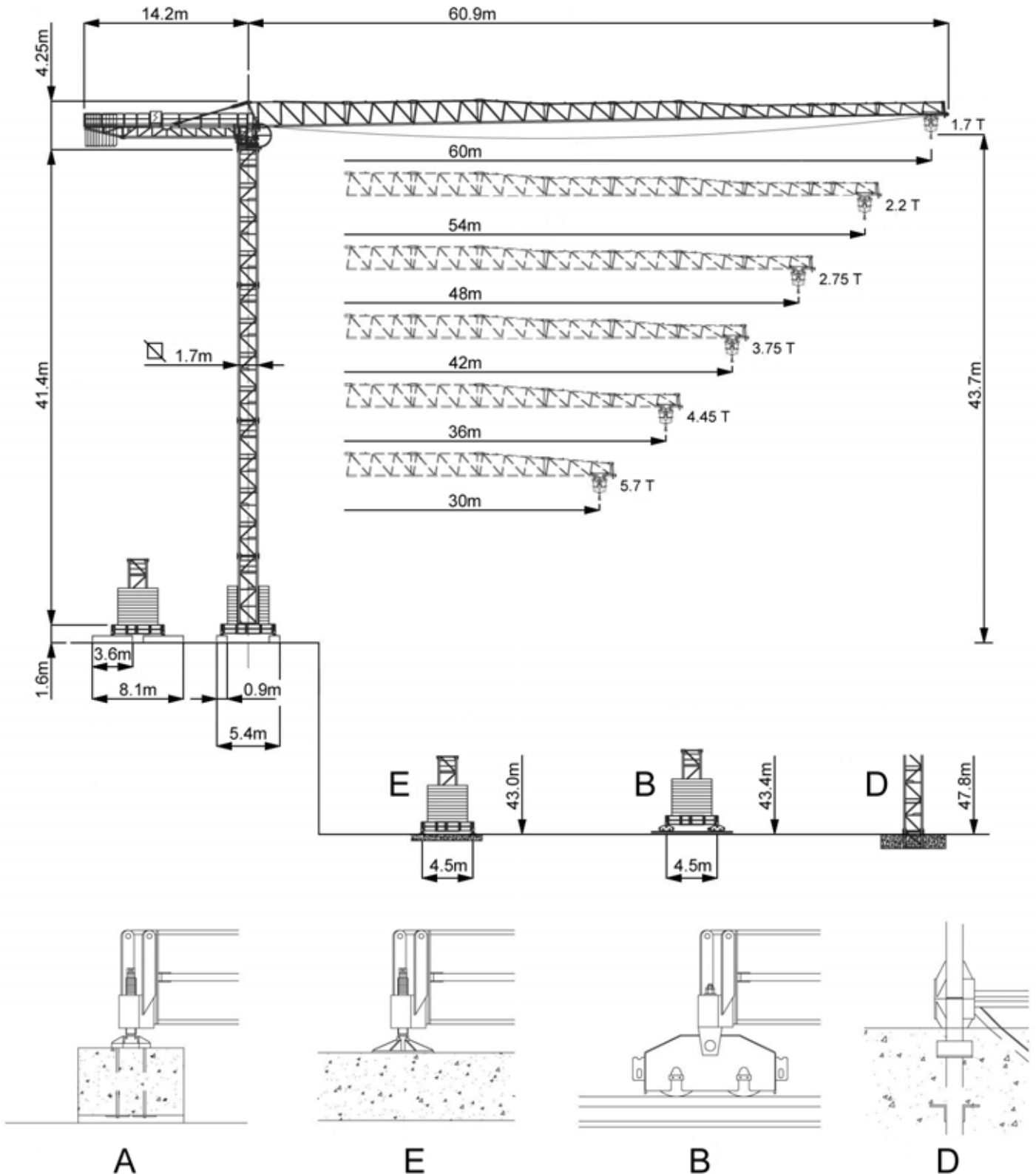
RAIVAN

# MR153+3

FLAT TOP CITY TOWER CRANE


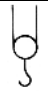

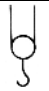


A3 FEM1,001



# VANSON

## RADIUS AND S.W.L.

Max s.w.l.		6000 kg  / 3000 kg 						8000 kg  / 4000 kg 					
Radius	m	30	36	42	48	54	60	30	36	42	48	54	60
Max s.w.l. from 1.7m	to	28.6	27.7	26.7	24.8	23.5	21.6	22.3	21.7	21.0	19.6	18.6	17.2
Radius (m)	12	6000	6000	6000	6000	6000	6000	8000	8000	8000	8000	8000	8000
	14	6000	6000	6000	6000	6000	6000	8000	8000	8000	8000	8000	8000
	16	6000	6000	6000	6000	6000	6000	8000	8000	8000	8000	8000	8000
	18	6000	6000	6000	6000	6000	6000	8000	8000	8000	8000	8000	7638
	20	6000	6000	6000	6000	6000	6000	8000	8000	8000	7833	7393	6763
	22	6000	6000	6000	6000	6000	5876	8000	7878	7595	7023	6625	6054
	24	6000	6000	6000	6000	5861	5314	7367	7134	6875	6353	5989	5468
	26	6000	6000	6000	5703	5345	4841	6723	6509	6270	5789	5455	4975
	28	6000	5946	5704	5236	4905	4438	6174	5975	5755	5309	4999	4555
	30	5700	5495	5269	4834	4525	4091	5700	5515	5310	4895	4607	4193
	32		5102	4891	4483	4194	3788		5115	4922	4534	4264	3877
	33		4924	4719	4324	4044	3651		4933	4747	4371	4109	3734
	34		4756	4558	4175	3903	3522		4762	4581	4217	3963	3600
	36		4450	4263	3902	3646	3286		4450	4280	3936	3696	3354
	38			3999	3658	3416	3075			4010	3685	3459	3134
	40			3763	3439	3209	2886			3768	3460	3245	2937
	42			3550	3242	3023	2716			3550	3256	3052	2759
	44				3063	2854	2561				3072	2877	2598
	46				2899	2700	2420				2904	2718	2451
	48				2750	2559	2291				2750	2572	2316
50					2430	2172					2438	2193	
52					2310	2063					2314	2079	
54					2200	1962					2200	1973	
56						1868						1876	
58						1781						1785	
60						1700						1700	

Two reeving only:

+ 100 kg

All intermediate loads are increased of 10% if the crane is equipped with "ULTRALIFT" control

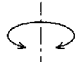
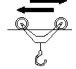
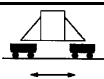
Total Installed Power	18.4 Kw (25 HP)	24.3 Kw (33 HP)	37 Kw (50 HP)
	40 Kw	46 Kw	59 Kw



In compliance with the 2000/14/CE instruction on noise level

# RAIVAN MR153+3

FLAT TOP CITY TOWER CRANE

## GENERAL TECHNICAL CHARACTERISTICS

		Speed	Power
Slewing		0.26 / 0.48 / 0.7 m/min (-1)	2 x 4 Kw
Trolley		18.8 / 35.2 / 54 m/min Progressive	5.5 Kw
Rail		20 m/min	2 x 4 Kw

Winch Type	Power		Rope (m)	Step	Load / speed	
	CV - ch PS - hp	kW				
25 HP - 6 VF	25	18.4	190	1	3000 kg - 7.5 m/min	6000 kg - 3.7 m/min
				2	3000 kg - 30 m/min	6000 kg - 15 m/min
				3	1500 kg - 60 m/min	3000 kg - 30 m/min
25 HP - 6 VF	25	18.4	190	1	3000 kg - 6 m/min	6000 kg - 3 m/min
				2	3000 kg - 30 m/min	6000 kg - 15 m/min
				3	1500 kg - 60 m/min	3000 kg - 30 m/min
				4	1000 kg - 72 m/min	2000 kg - 36 m/min
33 HP - 8 VF	33	24.3	193	1	4000 kg - 5.6 m/min	8000 kg - 2.8 m/min
				2	4000 kg - 28 m/min	8000 kg - 14 m/min
				3	2000 kg - 56 m/min	4000 kg - 28 m/min
				4	1300 kg - 67 m/min	2600 kg - 33.6 m/min
50 HP - 8 VF	50	36.8	300	1	4000 kg - 9 m/min	8000 kg - 5 m/min
				2	4000 kg - 28 m/min	8000 kg - 23 m/min
				3	2509 kg - 75 m/min	4689 kg - 38 m/min
				4	2509 kg - 75 m/min	4689 kg - 38 m/min
				5	1907 kg - 98 m/min	3516 kg - 49 m/min
50HP - 8 HVF	50	36.8	796	1	4000 kg - 5 m/min	8000 kg - 2.5 m/min
				2	4000 kg - 23 m/min	8000 kg - 11.5 m/min
				3	4000 kg - 43 m/min	8000 kg - 21.5 m/min
				4	2748 kg - 64 m/min	5496 kg - 32 m/min
				5	1940 kg - 87 m/min	3880 kg - 43.5 m/min

In compliance with the 2000/14/CE instruction on noise level

# VANSON MR153+3

FLAT TOP CITY TOWER CRANE

## HEIGHT UNDER HOOK

