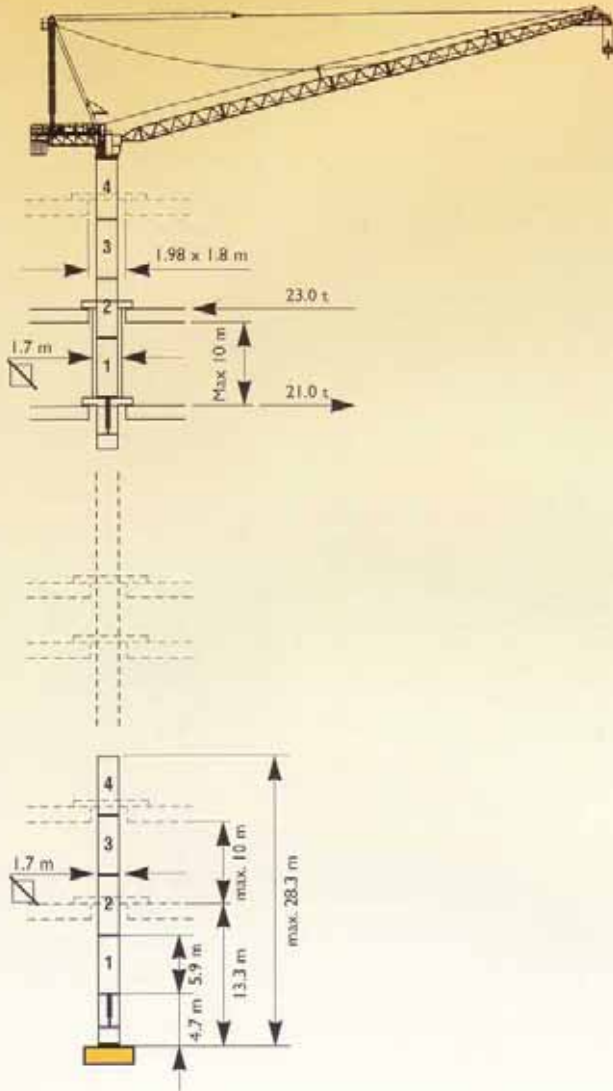
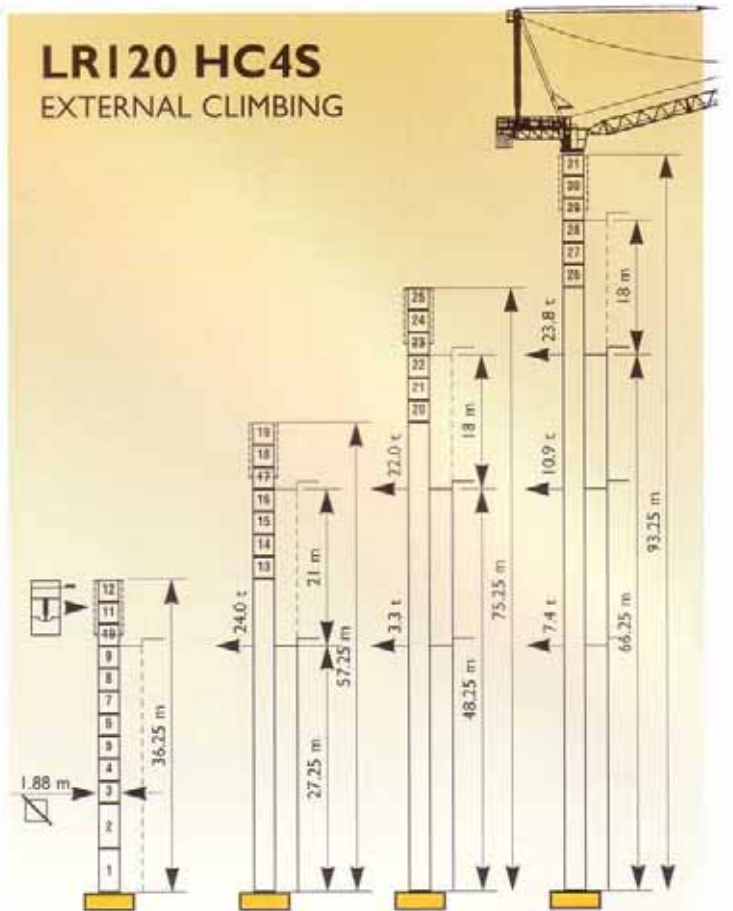


VANSON

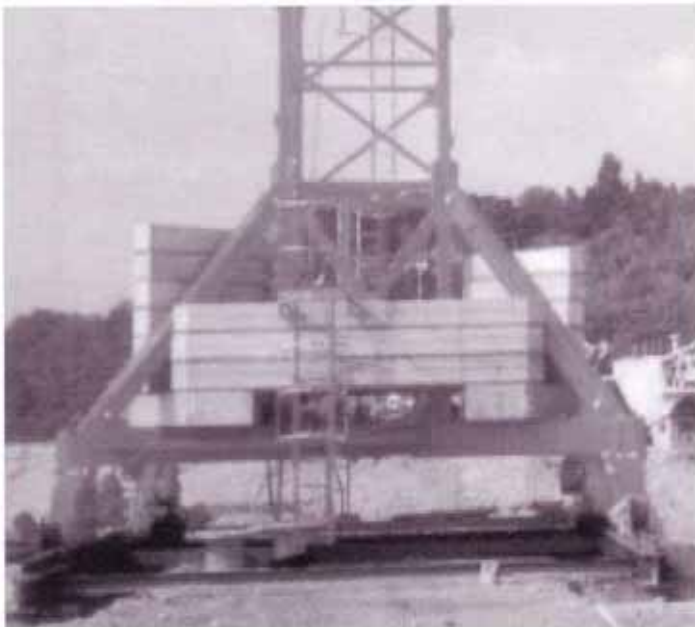
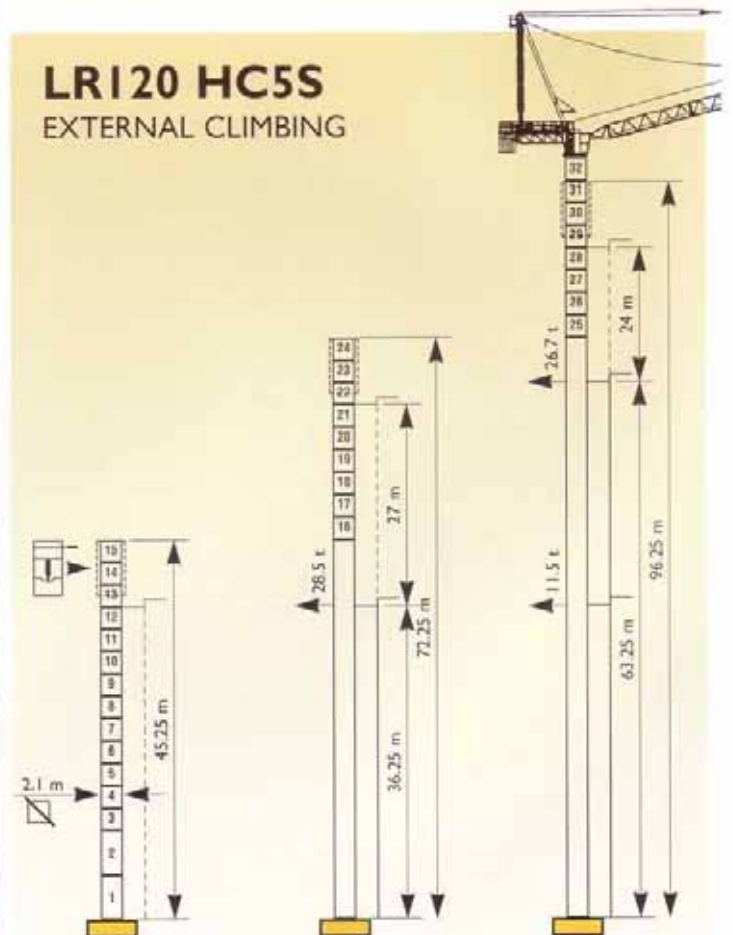
LRI20 RI FLOOR CLIMBING



LRI20 HC4S EXTERNAL CLIMBING





LRI20 HC5S EXTERNAL CLIMBING



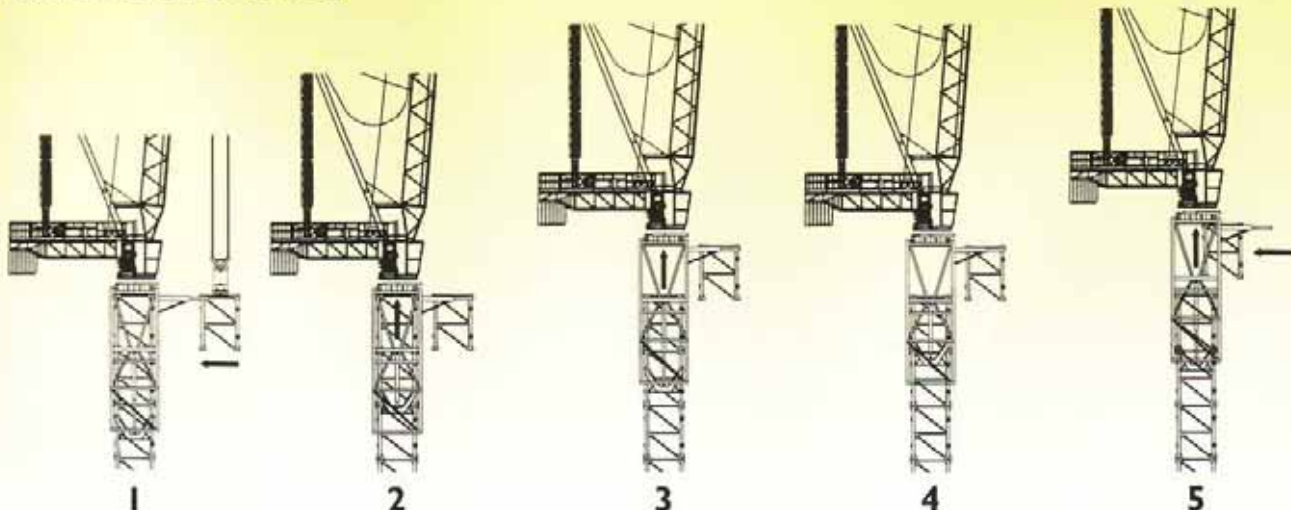
RAIVAN LRI 20

TOWER CRANE

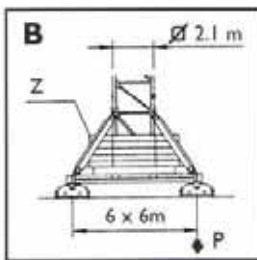
RADIUS & SWL

MAX S.W.L.		12000 Kg 					6000 Kg 				
JIB	m	28	33.5	39	44.5	50	28	33.5	39	44.5	50
MAX S.W.L. RANGE	from to	4.2 20.8	4.7 20.9	5.2 20.9	5.7 20.9	6.2 20.9	4.2 28.0	4.7 33.5	5.2 34.0	5.7 33.5	6.2 32.8
RADIUS (m)	20	12000	12000	12000	12000	12000	6000	6000	6000	6000	6000
	21	11959	11929	11965	11983	11885	6000	6000	6000	6000	6000
	22	11261	11211	11225	11219	11104	6000	6000	6000	6000	6000
	23	10626	10557	10550	10523	10393	6000	6000	6000	6000	6000
	24	10046	9960	9934	9887	9743	6000	6000	6000	6000	6000
	25	9514	9411	9368	9304	9147	6000	6000	6000	6000	6000
	26	9023	8906	8847	8766	8598	6000	6000	6000	6000	6000
	27	8570	8440	8366	8270	8090	6000	6000	6000	6000	6000
	28	8150	8007	7920	7810	7620	6000	6000	6000	6000	6000
	29		7605	7505	7382	7183		6000	6000	6000	6000
	31		6881	6758	6611	6395		6000	6000	6000	6000
	33.5		6100	5952	5780	5546		6000	6000	6000	5791
	35			5525	5340	5096			5736	5564	5335
	37			5011	4809	4553			5216	5027	4785
	39			4550	4333	4067			4750	4536	4293
	41				3905	3630				4113	3850
	43				3518	3234				3721	3448
	44.5				3250	2960				3450	3171
	46					2705					2913
48					2390					2593	
50					2100					2300	

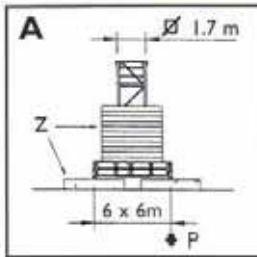
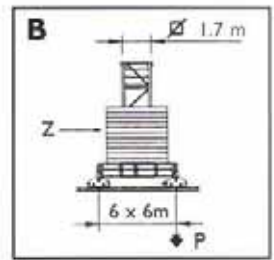
CLIMBING SEQUENCE



H.U.H. MAX. BASE BALLAST & CORNER PRESSURE

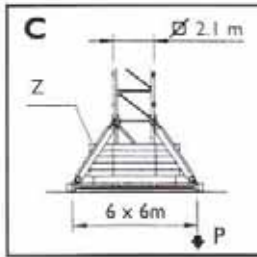
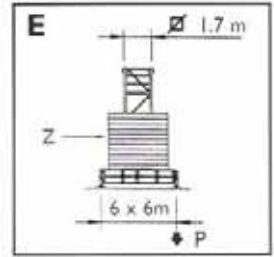


RAIL BASE	Wheel & Track Gauge = 6 m Min. Curve Radius = 12 m													
	2.1 m Tower						1.7 m Tower							
H (m)	22.3	25.3	28.3	31.3	34.3	37.3	40.3	43.3	46.3	49.3	13.3	19.2	25.1	28.0
max. Z (t)	33	44	48	54	63	68	76	85	94	105	41	41	42	48
max. P (kN)	541	573	599	630	670	711	813	921	1034	1153	495	526	568	593

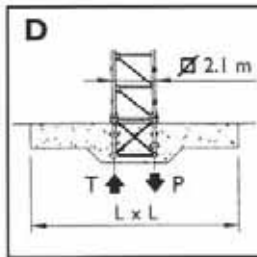


◀ BALLASTED BASE - type A				
H (m)	13.8	19.7	25.6	28.5
max. Z (t)	41	41	42	48
max. P (kN)	504	535	578	602

▶ BALLASTED BASE - type E				
H (m)	13.1	19.0	24.9	27.8
max. Z (t)	41	41	42	48
max. P (kN)	491	522	564	588



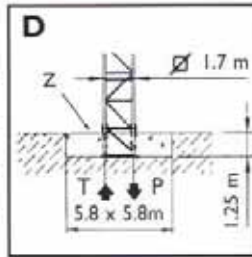
◀ BALLASTED BASE										
H (m)	21.4	24.4	27.4	30.4	33.4	36.4	39.4	42.4	45.4	48.4
max. Z (t)	33	44	48	54	63	68	76	85	94	105
max. P (kN)	531	562	588	618	657	698	798	904	1015	1132



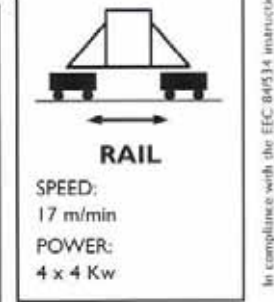
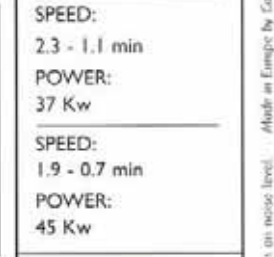
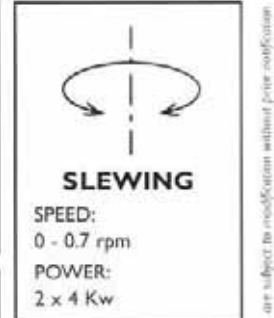
◀ EXPENDABLE BASE 2.1 m tower - L = 7.0 m										
H (m)	21.25	24.25	27.25	30.25	33.25	36.25	39.25	42.25	45.25	
T (kN)	677	704	734	766	783	880	1032	1192	1362	
P (kN)	981	1017	1055	1096	1142	1190	1350	1519	1698	
q max. (Kg/cm ²)	1.10	1.12	1.15	1.18	1.22	1.31	1.46	1.64	1.86	

▲ EXPENDABLE BASE 2.1 m with booster - L = 7.5 m		
H (m)	51.25	57.25
T (kN)	1733	2147
P (kN)	2086	2517
q max. (Kg/cm ²)	1.886	2.46

▶ EXPENDABLE BASE 1.7 m tower - L = 5.8 m				
H (m)	12.05	17.95	23.85	26.85
T (kN)	796	857	932	1270
P (kN)	1062	1135	1221	1270
q max. (Kg/cm ²)	1.522	1.648	1.811	1.912



WINCH...	50 HP 37 Kw - 10VF					60 HP 45 Kw - 12VF				
	STEP					STEP				
	1	2	3	4	5	1	2	3	4	5
LOAD (tonnes)	5.00	5.00	5.00	3.23	2.30	6.00	6.00	6.00	3.50	2.45
SPEED (m/min)	3	20	37	57	77	3	21	37	63	87
	1	10	19	29	39	2	10	18	31	43
LOAD (tonnes)	10.00	10.00	10.00	6.48	4.68	12.00	12.00	12.00	7.112	5.00
SPEED (m/min)	1	10	19	29	39	2	10	18	31	43
Total Installed Power	Hoist 37 Kw 106 Kw					Hoist 45 Kw 114 Kw				



Free standing H.U.H. varies according to the local maximum expected wind conditions.
(Consult us where adverse conditions apply.)

In compliance with the EEC 84/534 instruction on noise level. Made in Europe by Carli Reunard S.P.A. All specifications are subject to modification without prior notification.